

POWERED BY
365mesh

AI-Powered Monitoring for Smarter, Safer Bus Networks

Real-time visibility across fleets and
depots to improve safety, security,
and operational efficiency

*Rapid deployment. Always-on monitoring.
Anytime, anywhere.*

End-to-End Intelligent Monitoring for Bus Fleets & Depots

Our IoT and AI-powered solution is designed to transform how bus operators manage safety, security, and operations.

Combining advanced sensors, intelligent video analytics, and seamless connectivity, our platform provides real-time monitoring, automated alerts, and actionable insights across your entire transport network, from vehicles to depots.

Whether you're managing a single depot or a large-scale fleet, this solution enables safer operations, improved efficiency, and data-driven decision making.

Monitor. Detect. Analyse. Automate.



Real-time monitoring
across fleet and depot
environments



Early detection of risks,
incidents, and inefficiencies
Instant alerts to the right
personnel



Instant alerts
to the right personnel



Historical reporting and analytics
for continuous improvement



Fully integrated solution:
hardware, connectivity, and software

Buses: Use Cases & Features

Smart In-Vehicle Monitoring & Passenger Intelligence

Transform every bus into a connected, intelligent environment with real-time monitoring and AI-powered insights.

Driver Safety & On-Road Intelligence

Protect drivers, passengers, and the public with AI-powered in-vehicle monitoring and real-time alerts.



Driver drowsiness & distraction detection



Detect fatigue, phone use, and inattention with instant alerts to prevent incidents.



Harsh driving & behaviour monitoring



Identify harsh braking, acceleration, and unsafe driving patterns to improve performance.



Near-miss & road hazard detection



Detect pedestrians, cyclists, potholes and obstacles in real time to reduce accident risk.



Speed monitoring & traffic violation detection



Ensure compliance with road rules and operational policies.

Outcome: Reduced incidents, improved driver performance, and safer journeys.

Passenger Safety, Security & Experience

Create a safer and more controlled onboard environment using intelligent video analytics.

→ **Antisocial behaviour & incident detection**
Detect aggression, vandalism, fights, and emergency situations in real time.

→ **Accessibility monitoring**
Detect wheelchair access and ramp usage to ensure compliance.

→ **Fare evasion detection**
Identify unauthorised boarding to protect revenue.

→ **Vandalism & cleanliness detection**
Identify damage, graffiti, and littering to trigger faster maintenance.

→ **Passenger slip & fall detection + analytics**
Identify incidents and analyse trends to reduce risk and liability.

→ **Passenger of interest detection (privacy-aware)**
Detect flagged individuals while maintaining privacy compliance.

Outcome: Improved passenger safety, faster response, and enhanced service quality.

Passenger Analytics & Demand Intelligence

Understand passenger behaviour and optimise service delivery with real-time insights.

- **Passenger counting & crowding detection**
Monitor onboard capacity and detect overcrowding.
- **Boarding and alighting per stop**
Track how many passengers get on and off at each stop.
- **External passenger counting at bus stops**
Measure demand by analysing waiting passengers.
- **Passenger flow analytics (network-wide)**
Identify trends across routes and time periods for smarter planning.

Outcome: Optimised routes, better capacity planning, and improved passenger experience.



Environmental Monitoring (In-Vehicle)

Monitor onboard conditions to ensure comfort and safety:



Air quality monitoring
(CO₂, pollutants,
particulates)



Temperature and
humidity tracking



Noise level
monitoring

Outcome: Healthier environments and improved passenger comfort.

Depots: Use Cases & Features

Smart Depot Operations, Safety & Security

Create safer, more efficient depot environments with AI-powered monitoring and automation.

Security, Access Control & Loss Prevention

Protect depot infrastructure, vehicles, and assets with intelligent surveillance.



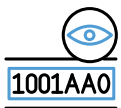
Asset theft detection

Identify theft of parts, tools, and equipment in real time.



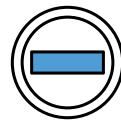
Fuel theft detection (petrol/diesel)

Monitor fuel usage and detect anomalies or unauthorised access.



ANPR (number plate recognition)

Automatically log bus entry and exit times with full audit trails.



Intrusion detection

Detect unauthorised access to restricted areas.

Outcome: Reduced losses, improved accountability, and stronger security.

Depot Safety & Workplace Monitoring

Create safer working environments with AI-powered detection and alerts.



PPE compliance monitoring

Ensure workers are wearing required safety equipment.



Yard safety & collision avoidance

Detect near misses between vehicles and pedestrians.



Worker safety monitoring

Identify unsafe behaviours and compliance risks.



Fire & hazard detection

Detect smoke, fire, spills, and hazardous conditions early.

Outcome: Reduced workplace incidents and improved compliance.

Depot Operations & Efficiency

Streamline depot workflows and maximise operational performance.

- **Automated vehicle inspection (entry/exit)**
Detect damage automatically and reduce manual inspections.
- **Workflow optimisation**
Track fuelling, cleaning, and turnaround processes.
- **Parking & space utilisation**
Optimise depot layout and vehicle allocation.
- **Vehicle movement tracking & flow monitoring**
Improve traffic flow and reduce congestion within depots.

Outcome: Faster turnaround, improved efficiency, and better resource utilisation.



Platform & Deployment

Flexible, Scalable and Easy to Deploy

- Works with existing cameras or new installations
- Centralised, web-based platform accessible anywhere
- Mobile or fixed deployments
- Off-grid capability (solar/battery)
- Connectivity via 4G/5G, Wi-Fi, satellite

Outcome: Rapid rollout with minimal disruption and maximum scalability.

Environmental Monitoring (Depot & Fleet)

Ensure safe, compliant, and sustainable operations.

- Air quality monitoring (CO₂, NO₂, particulates)
- Noise level monitoring
- Heat and environmental condition alerts

Outcome: Healthier environments and regulatory compliance.

Real-time Telematics

The 365mesh Telematics and Fleet Management delivers not only vehicle operations optimisation but resolves a range of other challenges when it comes to managing resources. From monitoring assets health and tracking usage patterns to predicting maintenance needs.



Real-Time Fleet Tracking

Track your fleet with live GPS visibility using 4G LTE connectivity. Access real-time and historical location data through an intuitive interface with updates every second. Customise data retention and securely share insights as needed.



Remote Vehicle Diagnostics

Monitor vehicle health and usage in real time with automated diagnostics reporting. Receive instant alerts for fault codes, enabling proactive maintenance, reduced downtime, and improved driver safety.



Crash Detection & Driver Behaviour Monitoring

Detect harsh braking, crashes, and high G-force events instantly using advanced sensors. Gain actionable insights to improve safety, training, and performance.

Enhance this with in-cabin AI cameras that monitor driver behaviour—detecting fatigue, distraction, or unsafe actions—and trigger real-time audio and visual alerts to keep drivers safe and alert.



Asset Tracking, Grouping & Geo-Fencing

Track vehicles, machinery, and assets in real time with advanced geo-fencing capabilities. Create custom zones and receive instant SMS or email alerts when assets move in or out of designated areas. Dynamically group and manage assets for complete operational control.



Centralised Platform

Manage your entire operation from a single, web-based platform. Configure, monitor, and analyse data in real time through a centralised dashboard accessible from any device, designed for both operators and management teams.



Fuel Usage & Efficiency Insights

Monitor fuel consumption and efficiency with detailed analytics. Detect abnormal usage or high emissions with configurable alerts, helping reduce costs, improve sustainability, and optimise fleet performance.



Duress Alarm System

Provide drivers with an added layer of protection through a one-touch duress alarm. Instantly notify dispatch or control centres of emergencies, enabling rapid response and improved driver security.



Pre-Start Checks & Daily Reporting

Automate pre-start inspections and daily reporting with real-time sensor data. Customise checks to suit your operations and receive alerts for any detected anomalies before vehicles are in use.



Collision Detection & Avoidance

Prevent incidents with intelligent collision detection systems. Monitor interactions between vehicles and pedestrians using blind-spot detection and onboard cameras, delivering real-time warnings to drivers to avoid potential hazards.



After-Hours Usage Alerts & Control

Monitor and control asset usage outside operating hours with configurable alerts. Set schedules to remotely disable or enable vehicles, improving security and ensuring compliance with operational policies.



Driver Behaviour Monitoring & Alerting

Leverage advanced AI to monitor driver wellbeing in real time. Using in-cabin cameras, detect fatigue, distraction, or distress and trigger instant alerts, helping prevent incidents before they occur.

Aether Sensor: Enhanced Monitoring



Non-Visual Behaviour Detection (Privacy-Safe Monitoring)

Use AI-powered acoustic sensing to detect:

- Aggression, shouting, or distress onboard
- Fights or escalating incidents
- Sudden impact sounds (e.g. vandalism, damage)

Key advantage: Works without recording conversations or video, ensuring privacy compliance while still detecting incidents.

Outcomes: Faster incident detection, privacy-compliant monitoring, reduced complaints and improved passenger safety.

Smoke, Vape & Air Quality Detection (Onboard Health & Compliance)

- Detect vaping or smoking onboard in real time
- Monitor air quality in enclosed bus environments
- Identify harmful gases or poor ventilation conditions



Outcome: Enforce no-smoking policies, improve passenger comfort and health and support compliance and reporting

Environmental & Hazard Monitoring at Depots



Detect fuel vapours, exhaust gases, or hazardous emissions



Identify unsafe environmental conditions



Monitor enclosed depot air quality

Outcome: Improved worker safety, regulatory compliance, early hazard detection



Environmental & Hazard Monitoring at Depots

- Detect leaks in maintenance areas or facilities
- Monitor water and energy usage across depot operations

Outcome: Reduce operational waste, prevent infrastructure damage, improve sustainability reporting

Anti-Tamper & Device Integrity for Depots

- Ensure monitoring devices remain active even during tampering or power loss
- Maintain continuous coverage in critical areas

Outcome: Reliable monitoring, reduced system downtime, improved security resilience



Custom Alerts & Policy-Based Monitoring at Depots

- Set alerts for:
 - After-hours activity
 - Restricted zone access
 - Environmental thresholds
- Tailor monitoring to depot policies and workflows

Outcome: Full operational control, reduced manual monitoring, faster response times

broadsecure **AI-Powered Theft Protection for Buses & Depots**

Enhance security across your transport network with intelligent, AI-driven monitoring that not only detects theft, but prevents, tracks, and enables recovery in real time.

Theft Protection – Inside The Bus

Onboard Theft & Suspicious Behaviour Detection

Protect drivers, passengers, and the public with AI-powered in-vehicle monitoring and real-time alerts.

- ➔ Detect theft, tampering, and suspicious passenger behaviour in real time
- ➔ Identify unusual patterns such as loitering, repeated movement, or abnormal activity
- ➔ Monitor and track movement of objects (e.g. bags, equipment) onboard
- ➔ Detect vandalism or sudden impact events

Outcome: Reduce onboard theft and vandalism while improving passenger safety and response times.



Passenger-of-Interest & Behaviour Tracking (Privacy-Aware)

- ➔ Identify flagged individuals using AI-driven analytics
- ➔ Track movement patterns across journeys
- ➔ Maintain privacy compliance with selective data handling

Outcome: Stronger onboard security without compromising passenger privacy.

360° Vehicle Surveillance & External Protection

- ➔ Deploy multi-camera systems to provide full visibility around the bus
- ➔ Monitor for external threats, tampering, or break-ins
- ➔ Detect suspicious activity when buses are parked or in operation

Outcome: Protect vehicles from vandalism, theft, and external interference.



Anti-Tamper & System Protection

- Detect interference with onboard cameras, sensors, or telematics devices
- Trigger real-time alerts if systems are unplugged, disabled, or tampered with

Outcome: Ensure continuous monitoring and prevent deliberate system shutdowns.

Onboard Asset Tracking & Theft Recovery

- Track portable onboard equipment and devices
- Enable real-time tracking in the event of theft

Outcome: Reduce asset loss and improve recovery of stolen items.

After-Hours Vehicle Protection & Control

- Detect unauthorised use of buses outside operating hours
- Remotely disable or restrict vehicle operation when required

Outcome: Prevent vehicle theft, misuse, and unauthorised access.

Evidence Capture & Investigation Tools

- Use motion-based search to quickly locate theft-related events
- Replay and track incidents across time
- Access secure cloud-stored footage with flexible

Outcome: Faster investigations, stronger evidence, and reduced operational overhead.



Theft Protection – At Depots

Perimeter Security & Intrusion Detection

- Detect unauthorised access to depot areas and restricted zones
- Monitor after-hours activity and trigger real-time alerts
- Create virtual boundaries around high-risk areas (fuel, storage, workshops)

Outcome: Prevent break-ins and strengthen overall depot security.

Asset Theft Detection & Behaviour Analysis

- Detect theft of tools, parts, and equipment in real time
- Identify suspicious behaviours such as loitering or repeated access to assets
- Track individuals across multiple zones to detect potential theft patterns

Outcome: Reduce asset loss and proactively prevent theft before it occurs.

Asset Tracking & Theft Recovery

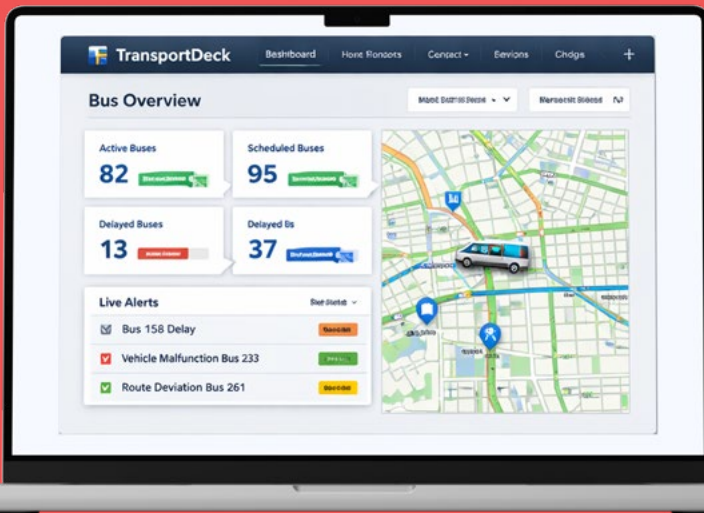
- Track mobile equipment and high-value assets across depot environments
- Enable real-time recovery tracking for stolen items

Outcome: Move beyond detection to full asset recovery capability.

Vehicle Monitoring & Movement Intelligence

- Track vehicle movement across depot zones (not just entry/exit)
- Detect abnormal behaviour such as unusual dwell times or routing
- Combine vehicle and personnel tracking for complete visibility

Outcome: Prevent internal misuse and improve operational accountability.



ANPR & Automated Access Logging

- Automatically log all vehicle entry and exit events
- Maintain a complete audit trail of depot activity

Outcome: Improve visibility, compliance, and operational control.



Fuel Theft Detection

Monitor fuel usage and detect anomalies or unauthorised access

- Trigger alerts for unusual consumption patterns

Outcome: Reduce fuel loss and improve cost control.



Anti-Tamper & System Resilience

- Detect interference with cameras and monitoring systems
- Maintain operation even during tampering or power disruption

Outcome: Ensure reliable, continuous security coverage.

Advanced Threat Intelligence & Pattern Detection

- Use motion heatmaps and analytics to identify high-risk areas
- Detect abnormal activity patterns automatically
- Identify repeat offenders or recurring issues

Outcome: Shift from reactive security to proactive threat prevention.



Real-Time Alerts & Response

- Send instant alerts via SMS/email for security events
- Enable rapid response from security teams

Outcome: Minimise response time and reduce impact of incidents.

Broadsecure Use Cases

- Intelligent, cloud based video surveillance solution**
 With advanced AI/ML capabilities
- Compatible with users' existing cameras**
 No need to replace cameras
- Single dashboard with floor MAP**
 Shows all camera locations with one-click access to live video feeds
- Streaming backup to cloud**
 Multiple storage durations for footage: 30, 60, 90,120, 180 Days (custom)
- Image Detection and Identification**
 Advanced AI/ML capabilities to accurately process and detect items off footage
- Object Identification**
 AI capabilities to accurately identify objects
- Animal Identification**
 AI capabilities to accurately identify species of animals
- Identify and classify by people demographics**
 AI capabilities to identify age, gender, colour and type of clothing
- Identify only people of interest**
 Protect the privacy of people outside the watch list with a no biometric data saving enabling option
- Behavioural analysis capabilities**
 Manage and analyse people's behaviours to optimise standard operating procedures
- Allow Motion Search**
 Search and filter through a library of motions within specific area of interest in the video stream. Set an alert for any activity within a particular area of interests.
- Face Search with integration into AD**
 Pull up a library of faces detected and select one to see all the times and dates of when they were identified in footage
- Motion heat maps**
 View the way people or objects move around areas, including Push events/triggers
- Person tracking based on facial or electronic tag**
Utilise tags and facial
 Recognition to implement site safety monitoring and automate time attendance
- Create custom zones**
 Narrow down areas of interest on a field of view. Collect data and set up alerts that occur only within this zone
- Create virtual fences and boundaries**
 Create landscape boundaries on a digital map and contain people/ animals using tags
- History View**
 View the history of data collected which updates every hour, up to 120 days
- ONVIF compliant**
 Remotely control the cameras' zoom, focus etc
- Real time camera surveillance**
 With intelligent detection directional pan, tilt and zoom capabilities
- Share access**
 Send incident alerts to anyone via sms and email

Workplace Safety

- Detect workplace incidents and alert before they happen**
 Identify potential problems quickly and isolate recurring problems
- Machinery safe distance monitoring and alerting**
 Produce an alert triggering detection zone around machines and restricted areas
- Man down detection and alerting**
 Instantly trigger alerts so immediate action can be taken
- Collision detection and avoidance**
 Install blind spot detection cameras, giving drivers real-time warnings of collision risks
- Workplace machinery exclusion zone monitoring and detection**
 Keep unauthorised personnel safe and distant from caution zones
- PPE monitoring, detection and identification**
 Identify PPE and deny workers from entering job sites if all the safety wear required is not detected
- Pedestrian vehicle/machinery accident detection**
 Reduce the risk of vehicle-pedestrian collisions in busy workspaces
- Realtime electronic tags for unique identification**
 Utilise tags to implement site safety monitoring around exclusion zones

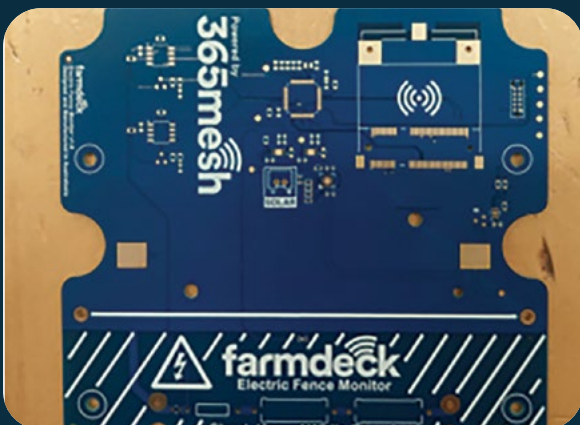
Your security is our priority.

Data collected from the sensors is owned by the customer and data is stored locally on customer premises with optional backup in the cloud.

Locally manufactured in Australia for fast shipping and local support

Rapid prototyping
Injection moulding
Assembly and shipping


Electronics PCB
Hardware testing
Manufactured by experienced engineers



Managed Services Provider operating

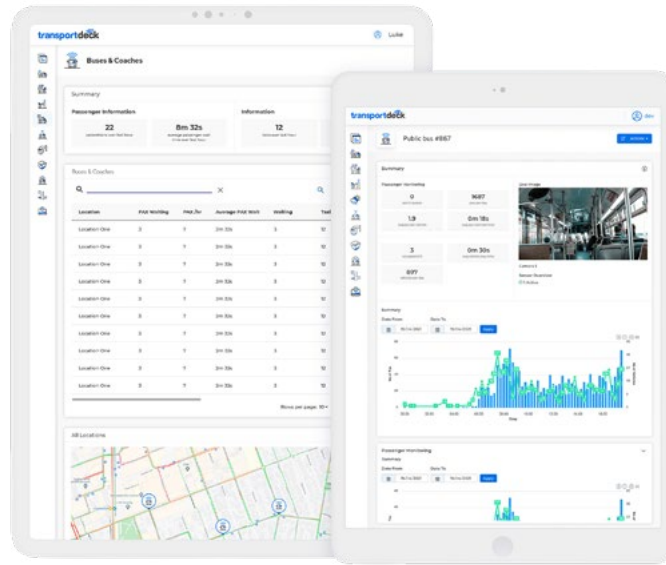
24x7

NOC (Network Operations Centre) in Sydney and Melbourne.



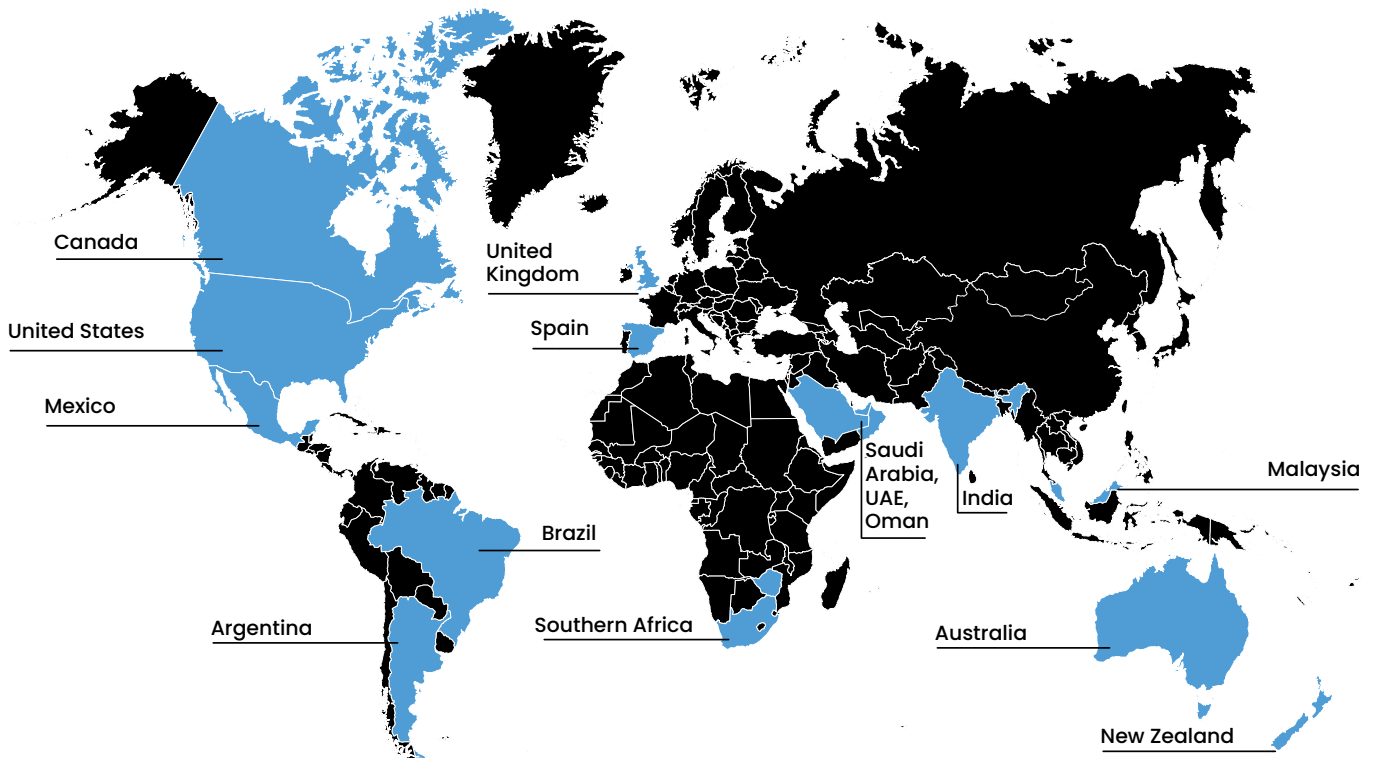
**Monitor.
Detect.
Analyse.
Automate.**

Gain real time visibility over your communities with 365mesh IoT portal.



Our Resellers can be found globally

Australian based, owned & operated with local manufacturing capabilities.



Contact us

Visit our Website: www.365mesh.com

Follow us on social media

Email us: sales@365mesh.com

[@365mesh](https://www.instagram.com/365mesh)