



# **broadsecure**

**Intelligent, cloud based  
video surveillance  
solution with live site  
monitoring for safety  
enforcement and theft  
detection**

POWERED BY  
**365mesh**

Broadsecure is an intelligent end-to-end cloud based video surveillance solution that utilises advanced AI/ML technology to detect and identify a wealth of objects and movements through processing live video footage imagery and data collection features for analysis.

Broadsecure provides users with comprehensive surveillance over their environment and has the ability to detect and track people and objects accurately. Broadsecure can also differentiate between individuals and objects, recognise faces, identify suspicious behaviour, analyse patterns around people flow and movements, detect abnormal activities and raise alerts to security personnel. Our solution's capabilities can also improve and bolster the user's workplace safety, access control, visitor management, employee attendance, and contractor compliance.



## What makes us different

- Our solution can be integrated with the user's existing IP cameras already on site, meaning existing cameras do not need to be replaced to use Broadsecure
- Our AI/ML capabilities can detect and identify objects and movements with extremely high levels of accuracy.
- ISO27001 certified: We keep your environment safe, as well as your data.

Our organisation has over two decades of experience in networking technologies and cyber security, which form an integral part of the underlying architecture required for IoT and other networks. Our extensive network and software engineering capabilities give us a unique ability to understand and deploy every component of a video surveillance or IoT network.



## Smart Security and Worksite Safety wherever you need it

Broadsecure can be utilised across a range of industries

- Agriculture and Farming
- Smart Cities
- Corporate workplaces
- Transport and Logistics
- Education
- Health care and Aged care
- Industrial and Manufacturing
- Oil, Mining and Gas
- Ocean and Marine
- Parks and Wildlife
- Retail and Food
- Defence
- Construction
- Earthmoving and large infrastructure



### **Real time camera surveillance**

With intelligent detection directional pan, tilt and zoom capabilities.

### **Intelligent, cloud based video surveillance solution**

With advanced AI/ML capabilities.

### **Compatible with users existing cameras**

There is no need to replace your existing cameras as broadsecure's AI/ML algorithms can be integrated with other IP cameras already in use.

### **Single dashboard with floor**

MAP Shows all camera locations with one- click access to live video feeds.

### **Streaming backup to cloud**

Multiple storage durations for footage: 30, 60, 90,120, 180 Days (custom).

### **Share access**

Send incident alerts to anyone required via sms and email.



### **History View**

View the history of data collected which updates every hour, up to 120 days.

### **ONVIF compliant**

Remotely control the cameras' zoom, focus etc.

# Use Cases

## Image Detection and Identification

Broadsecure uses our in house built advanced AI/ML algorithms which give IP cameras capabilities to accurately process and detect items off footage in real-time.

### Object Identification

AI/ML capabilities to accurately identify objects such as animals, products, vehicles, people, plants, etc.

### Animal Identification

AI/ML capabilities to accurately identify species of animals, their breeds, colour, etc .

### Behavioural analysis capabilities

Manage and analyse people's behaviours to optimise standard operating procedures such as working, standing, sitting, etc.



### Identify and classify by people demographics

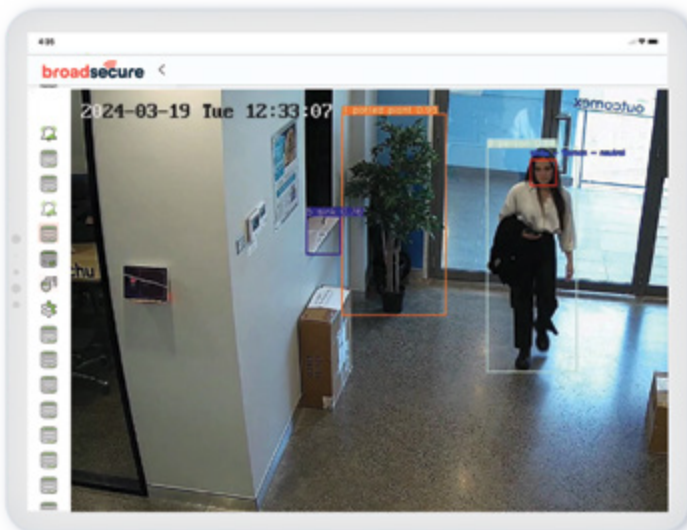
AI/ML capabilities to identify age, gender, colour and type of clothing of a detected person

### Identify only people of interest

Protect the privacy of people outside the watch list with a no biometric data saving enabling option

### Face Search with integration into AD

Pull up a library of faces detected and select one to see all the times and dates of when they were identified in footage

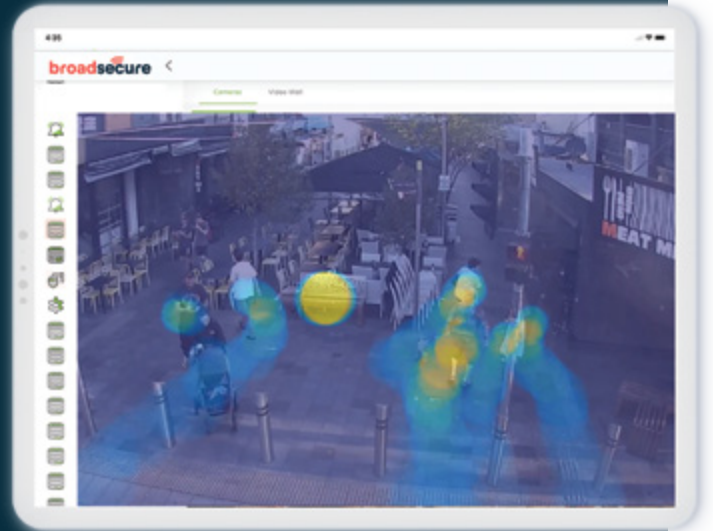


### **Allow Motion Search**

Search and filter through a library of motions within specific area of interest in the video stream. Set an alert for any activity within a particular area of interests.

### **Motion heat maps**

View the way people or objects move around areas, including push events/triggers and gain visibility into pedestrian traffic flow (peak hours)



### **Person tracking based on facial or electronic tag**

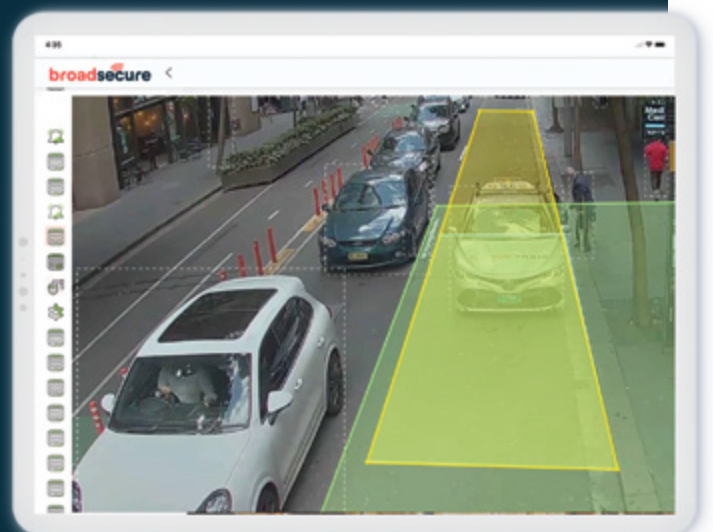
Utilise tags and facial recognition to implement site safety monitoring and automate time attendance. Tags can also be utilised to manage entry to authorised personnel only.

### **Create custom zones**

Narrow down areas of interest on a field of view. Collect data and set up alerts that occur only within this zone

### **Create virtual fences and boundaries**

Create landscape boundaries on a digital map and contain people/ animals using tags.



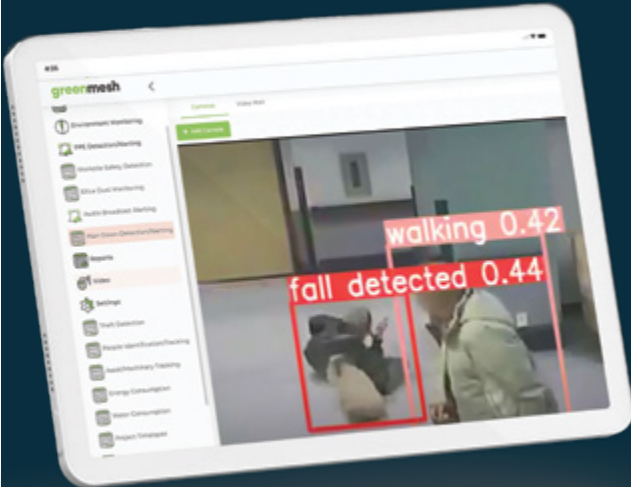
# WORKPLACE SAFETY

## Image Detection and Identification

Identifies PPE items such as safety headgear, glasses, and vests.

Monitors whether workers are properly wearing PPE wear while on site and restricts workers from entering job sites if all the safety wear required is not detected.

Broadsecure also utilises real time electronic RFID tags. It's unique identification feature can identify workers who do or do not comply with PPE standards, increasing the implementation of site safety monitoring around exclusion zones and machinery safe distancing.



**Person down detection and alerting**

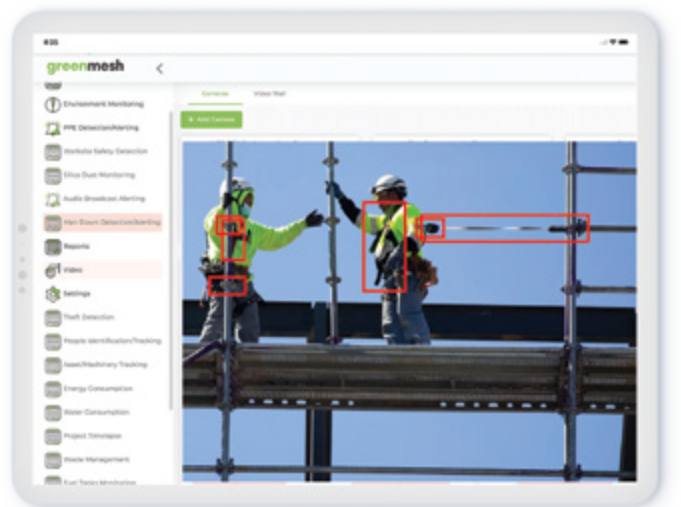
Uses machine perception and video analytics to detect a single person or people who have fallen or slipped, and triggers instant alerts to authorised personnel so they can take immediate action.

**Reports on trip and fall detection**

With the use of person down alerting, Broadsecure keeps a count record of areas with repeated trips and fall incidents, giving users an accurate record of accident occurrences (if they are not reported by workers).

## High-height risk incidents (Harness detection and exclusion zones)

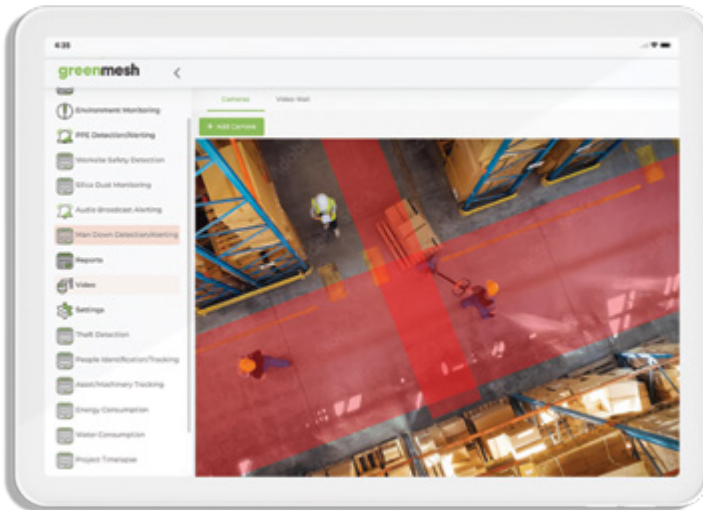
Our cameras detect if workers are working from dangerous heights without a harness, monitors and enforces exclusion zones around moving plant situations, overhead power lines, overhead cranes, Rail corridors, etc.



## Detect workplace incidents and alert before they happen

Determine safe distances between workers and moving machinery/equipment with exclusion zones.

This involves the installation of strategically placed blind spot detection and driver monitoring cameras onto vehicles to give drivers real time warnings of hazardous collision risks such as other objects or people who are close by.



## Workplace machinery exclusion zone monitoring and detection

Keep unauthorised personnel safe and distant from caution zones

## Pedestrian vehicle/machinery accident detection

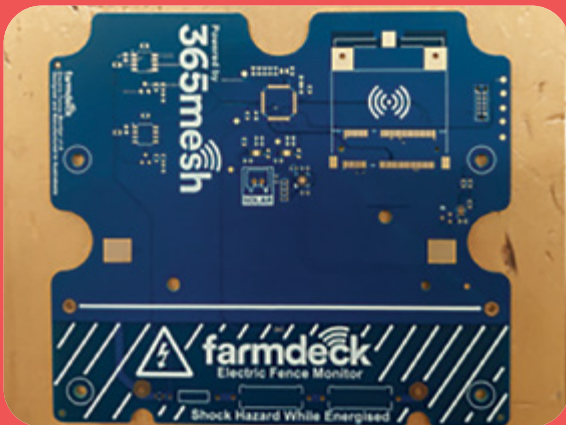
Detects when a moving person and vehicle are in a potential path of collision and advises of smart precautions to regulate safer walking path practices and improves awareness while creating a fluid traffic environment.

# Your security is our priority.

Data collected from the sensors is owned by the customer and data is stored locally on customer premises with optional backup in the cloud.

## Locally manufactured in Australia for fast shipping and local support


- > Rapid prototyping
- > Injection moulding
- > Assembly and shipping
- > Electronics PCB
- > Hardware testing
- > Manufactured by experienced engineers



Managed Services Provider operating

# 24x7x365 days

NOC (Network Operations Centre) in Sydney and Melbourne.



**MONITOR.  
ANALYSE.  
STREAMLINE.  
AUTOMATE.**

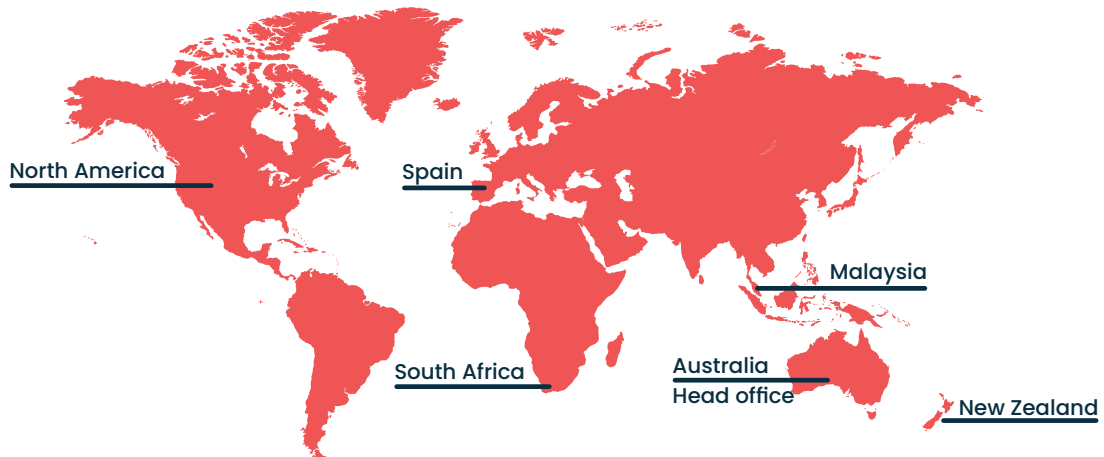
POWERED BY **365mesh**

# Gain real time visibility over your railway operations and projects with 365mesh IoT portal.



## WE ARE FOUND GLOBALLY

Australian based, owned & operated with local manufacturing capabilities



## Contact us

Visit our Website: [www.365mesh.com](http://www.365mesh.com)

Email us: [sales@365mesh.com](mailto:sales@365mesh.com)

Follow us on social media



# outcomex

POWERING 365mesh greenmesh broadsecure