

healthdeck



POWERED BY
365mesh



People in care Tracker

People in care movement & safety insights,
AI-enabled, clinician supervised.

Gain real-time visibility into people in care, understand wait times better, optimise workflow and increase safety.

HealthDeck is an all-in-one Internet of Things (IoT) and AI solution developed for hospitals, clinics and aged care facilities. Providing real-time visibility into people in care activity, critical assets, and facility operations, HealthDeck helps to improve safety, optimise workflows, and deliver better people in care and facility outcomes.

Key benefits

- **Improve People in Care Safety:** AI analytics provide real-time awareness of people in care mobility, supporting faster responses and improved coordination while maintaining clinician oversight.
- **Enhance Efficiency:** Balance staff allocation using real-time interaction data.

- **Ensure Compliance:** Automated reporting for audits and safety standards.
- **Smarter Facilities Management:** Monitor power, gases, and critical assets.
- **Scalable & Secure:** From a single ward to multi-site hospital networks.

As an innovative, customisable, and cost-effective IoT platform, HealthDeck helps health and aged care facilities improve the quality of care for people in care by combining location context with physical activity metrics. Our people in care tracker allows clinicians to understand where and how people in care are moving, resting, or at risk, while also enabling high-value clinical research through continuous, precise tracking of people in care movement, posture, and location. It collects movement data from wearable sensors and applies AI to surface descriptive and predictive insights, like mobility trends and potential risk zones to help staff prioritise attention.



CareTrack, our lightweight wearable, is designed to attach to standard people in care wristbands.

It incorporates advanced AI and IoT technology for centimetre-level accuracy, an Inertial Measurement Unit for motion and orientation and advanced features.

Data is made immediately available on our dashboards for clinician and hospital staff to view and make informed decisions about care in real time.

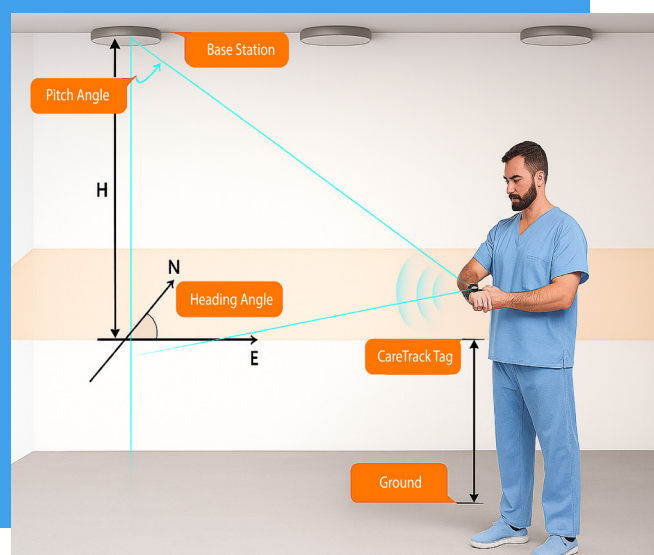


Make smarter, more efficient and better informed decisions about people in care.

Edge algorithms translate motion and location signals into descriptive data for cloud display enabling precise, low-latency awareness without collecting sensitive biometrics. Our platform collects real-time data through ceiling-mounted base stations and CareTrack tags, calculating angles and locations to build a clear, accurate picture of people in care activity. Edge processors calculate angles and positions locally; only derived movement metrics are uploaded, preserving people in care privacy.

Benefits of this type of data collection:

- Provides for higher precision of location tracking
- Uses lower power consumption, suitable for battery-powered applications, like IoT devices and wearables
- Improves security compared to Wi-Fi, supports encryption and authentication mechanisms, enhancing the security of location data transmitted between devices.



All data transmission is encrypted end-to-end. Role-based access and anonymisation ensure privacy compliance under HIPAA and TGA.

Together, CareTrack and HealthDeck form a research-grade health analytics and real-time safety monitoring platform that not only supports current clinical trials but also lays the groundwork for seamless integration into everyday clinical care pathways in the future.

HealthDeck is capable of streamlining operations and maintenance, and empowering staff.

With the people in care tracker, hospital and clinician teams are empowered to efficiently:



Monitor people in care location and movement



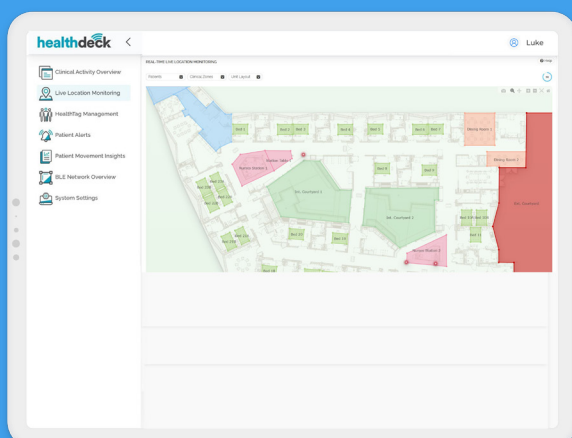
Identify potential issues before they become detrimental



Receive real-time alerts to take immediate action

Advanced Features

- ➔ **Mobility Tracking:** AI summarises movement frequency and patterns to help staff observe recovery progress or detect reduced mobility periods.
- ➔ **Posture & Fall Detection:** Agentic sensor fusion identifies posture transitions and potential falls, triggering alerts for staff verification.
- ➔ **Staff Interaction Analysis:** Descriptive analytics capture interaction durations; prescriptive AI can recommend optimal care distribution to balance workloads.



- ➔ **People in care Proximity Monitoring:** Descriptive spatial analytics show when people in care spend extended time alone or near others, supporting safety and mental-health-aware care planning.
- ➔ **Wandering & Zone Alerts:** Predictive AI models learn typical movement paths and alert when deviations occur, helping prevent wandering incidents.
- ➔ **Live Ward Map:** Dynamic maps update people in care location data in near-real time, giving staff instant spatial awareness across wards.

Immediately evaluate highly accurate real-time readings that are automatically uploaded onto the HealthDeck dashboard.

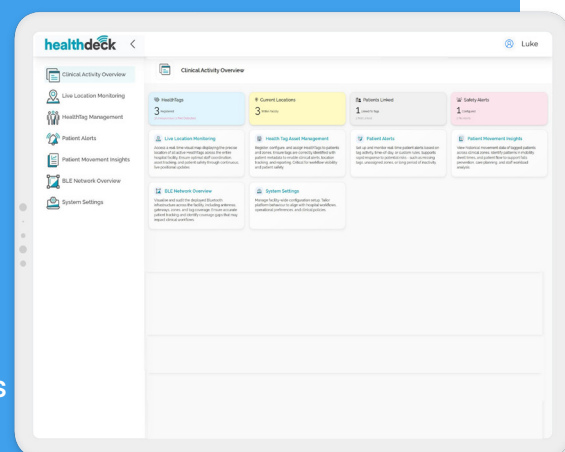
All data from CareTrack and edge sensors is instantly available through intuitive dashboards, giving nurses and clinicians a complete view of residents' mobility patterns. This enables timely, data-driven decisions and more responsive care in real time. By integrating seamlessly with AI and IoT edge sensors and access points, and using AI-enhanced Radio Resource Management to ensure reliable performance in RF-dense hospital and aged-care environments, clinicians can instantly access all relevant data and alerts through the HealthDeck dashboard. This empowers them to make informed, proactive decisions that directly improve outcomes for people in care.

Operational & Research Benefits

CareTrack allows for baseline mobility profiles recorded pre-treatment. This means that it can provide comparison data on continuous monitoring of changes in:

- Movement frequency
- Walking speed
- Time spent in different postures
- Including contextual location tagging (in bed, walking the ward, at therapy).

This results in generating objective mobility baselines and continuous recovery metrics to support operational audits and workflow evaluation.



The range of benefits are multiple:

- ➔ **For Clinicians:** Early-warning alerts, objective people in care progress data, reduced manual monitoring.
- ➔ **For Researchers:** High-frequency, high-accuracy datasets enabling detailed statistical analysis (mobility data is de-identified).
- ➔ **For People in care:** Enhanced safety, less intrusive monitoring, personalised recovery tracking.



USER- FRIENDLY DASHBOARD

POWERED BY **365mesh**

Use Cases

All our features are presented centrally on a user-friendly dashboard and can be accessed remotely via a web browser. HealthDeck gives you the possibility to configure alerts and notifications, as well as reports for each feature.



Cold Room and Freezers

Monitors temperatures, humidity in regards to the food stored in freezers, refrigerators and cold rooms.



Waste Management

Capture data in remote locations, improve inventory control, like recognising when bins need to be emptied, and validate the success of recycling programs.



Liquid Spillage

Monitors and alerts liquid spillage autonomously, maintaining safety and OHS standards.



Temperature Monitoring

Measures temperature of indoor/outdoor, fridges and similar, with real-time alerting and reporting.



Energy Consumption

Understand how your facilities and appliances drive energy consumption at your hospital or clinic.



Environment Monitoring

Measures and alerts on air quality, noise levels, light quality, OHS parameters.



Security

Monitors surveillances and detects people in unauthorised areas.



Compliance Reporting

Generates and exports reports required for industry compliance purposes and audits.



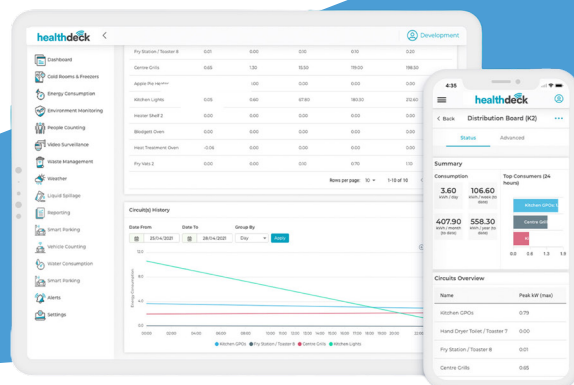
Smart Parking Bays

Uses IoT sensors to track real-time bay occupancy and generate analytics for parking efficiency.

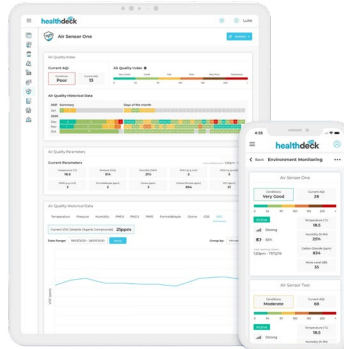


Noise Monitoring

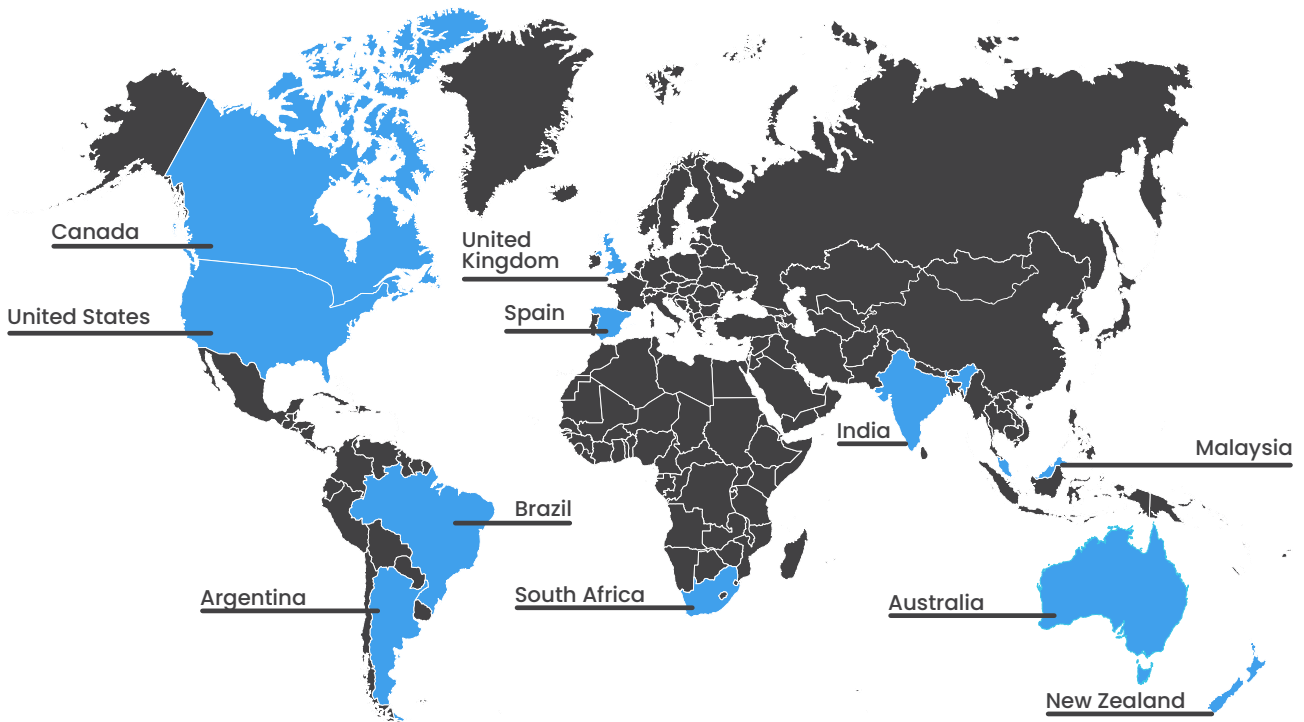
Measures and alerts on noise levels.



Get real-time visibility, insights and enhance the quality of care for people in care and improve facilities with 365mesh IoT portal.



WE ARE FOUND GLOBALLY



Contact us

Follow us on social media

@365mesh

Join our Reseller Program

Direct customer enquiries welcome or alternatively, we will introduce you to a relevant skilled 365mesh integration partner in your region.