

Public Safety and Emergency Response

POWERED BY
365mesh

**Keeping our rescue heroes remotely
connected during times of emergencies**

*By delivering ongoing connectivity and communications:
Vehicle as a Node (VaaN) connectivity solution*

*Australian owned and operated with locally based
hardware/software design & manufacturing*

**Fire brigade | Police | Ambulance
First responders | Search and rescue teams
Natural disaster responders**



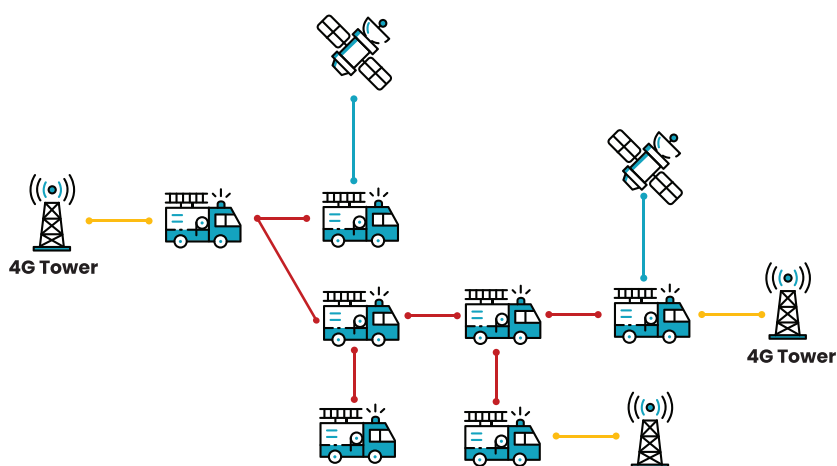
365mesh's VaaN emergency response solution is designed to keep emergency first responders connected, especially in times of urgency in remote, highland areas with low connectivity.



Our Solution

Utilising dedicated emergency response vehicles such as fire trucks and tankers, command vehicles, ambulance, police and air and marine vessels, our solution uses these assets as mobile nodes with a combination of multiple connectivity (mobile broadband (4G/5G), LEO satellite and Mesh connectivity) to create a seamless and reliable network for real time communication, tracking and data collection amongst first responders.

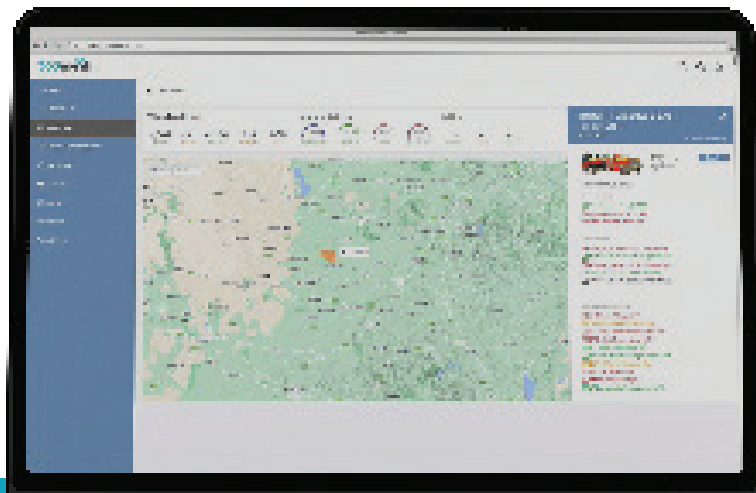
This solution is used by emergency, disaster and medical response services, search and rescue teams, bushland firefighters, police and other organisations that ensure public safety, security, and health by addressing and resolving emergencies.



Deliver internet connectivity to devices in vehicles

Using vehicles as nodes, maintain mobile connectivity on multiple moving vehicles such as fire trucks, ambulance, police and rescue vehicles, especially during critical rescue times in low connected areas where vehicle location tracking and communication between first responders is crucial.

Reliable remote connectivity gives rescue teams the ability to:



Real time communication

Have the ability to communicate and share information between those in the field who require situational awareness of environment conditions (fires, floods, dangerous landscapes and weather conditions) that are up to date across wide areas.

Receive real time alerts

Receive alerts and notifications from proactive monitoring of incident prone environments (bushland, dams and rivers) and responding to issues before they become critical such as bush fires and flash floods.



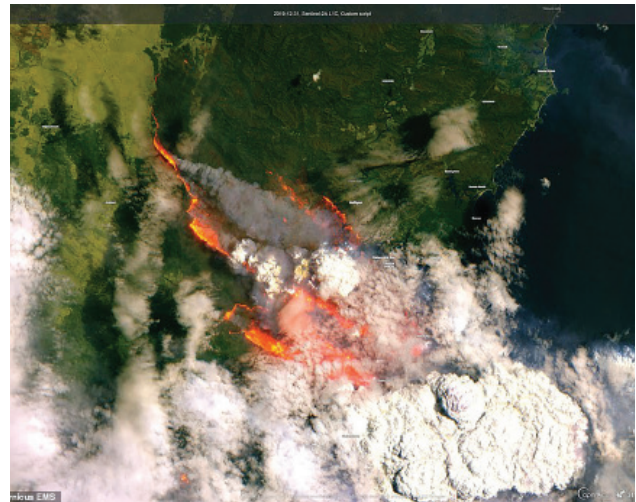
Access critical information in a timely manner.

Access data such as area of fire spreads, barometric readings, flood water levels and locations of rescue team members and assets in real time while in the field.

Collect data to be used for scenario visualisation

Visualise asset location and telemetry data in real time. Incorporate high-resolution satellite and drone imagery to provide advanced situational awareness.

365mesh is able to provide up-to-date satellite imagery that can enable firefighters and rescue services to visualize a fire's progression on a map, alongside other vital information like water sources, infrastructure, and evacuation routes.



Gain real time connectivity visibility safely while on the move

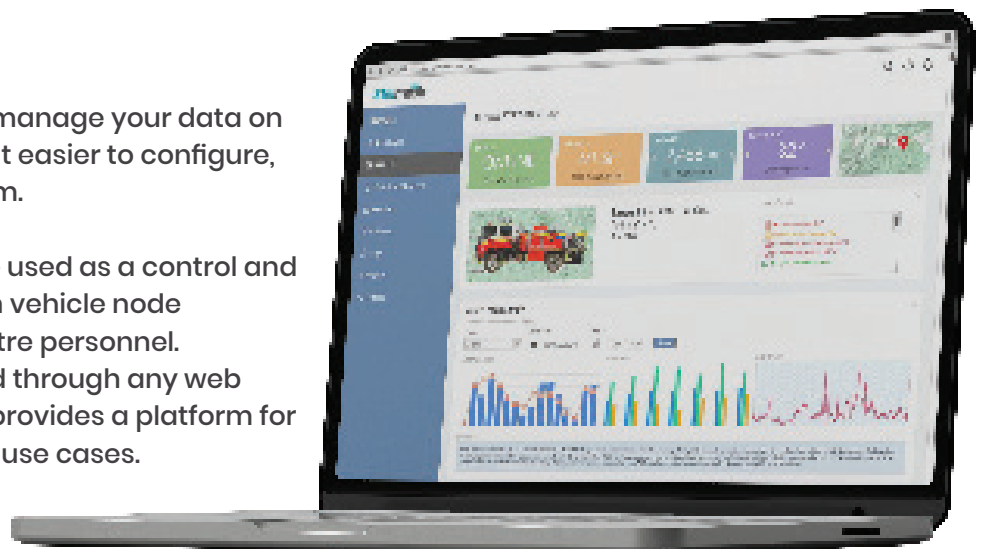
Be informed in real time about connectivity availability, strength and accessibility while in the vehicle (on screens).

365mesh's dashboard require low touch user interaction with a simple user interface, ensuring that vehicle drivers can safely comprehend the information on screen while driving without the need to touch the screen.

All in One platform

Control your operations and manage your data on one centralised view, making it easier to configure, update, and troubleshoot them.

The 365mesh platform can be used as a control and visualisation platform for both vehicle node operators and command centre personnel. The platform can be accessed through any web browser enabled device and provides a platform for a multitude of other 365mesh use cases.



Interoperable, flexible and scalable.

As the technology continues to evolve and new technologies emerge, the Solution is flexible to be installed in a wide range of dedicated emergency response vehicles that are currently being used and may be introduced in the future.

Improve disaster preparedness and response through our IoT- enabled monitoring , prediction and early warning solutions

365mesh provides a wide range of IoT use cases to assist in all the phases of emergencies. From **Mitigation, Preparedness, Response, and Recovery.**

365mesh utilises advanced Ai and machine learning, as well as purpose built sensors to aid in monitoring and predicting potential problems in disaster-prone areas, as well as using real-time sensors to effectively assist first responders during rescues.



Bushfire smoke detection



Digital fire warning signage



Temperature monitoring



Rainfall monitoring



Water monitoring and management



Weather station



Air quality monitoring and detection of various hazardous air particles



Water body and flood monitoring and alerting



Infrastructure monitoring and maintenance



Vehicle and fleet tracking



Vehicle rollover alerts



Vehicle health and usage monitoring



Object, people, animal identification and recognition/classification



Create virtual boundaries and receive boundary alerts (bushland and water sources)



Heat mapping



Disaster timelapse (with cameras and via satellite imagery)



Land and aerial surveillance



In field safety gear detection



Wearable devices for rescue team tracking



Smart body cameras

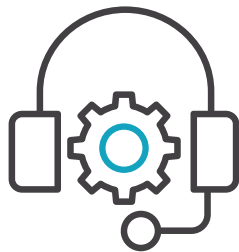
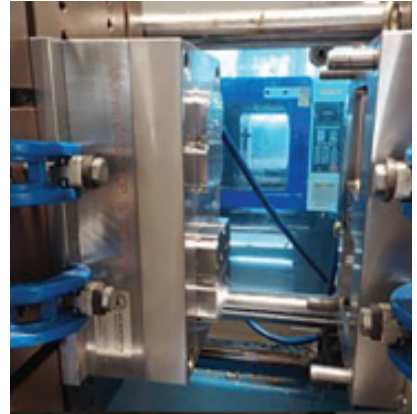


Search & rescue using advanced radar technology

Our Sensors

365mesh sensors are locally manufactured in Australia and New Zealand for quality assurance, fast shipping and local support.

Data collected from the sensors is owned by the customer and the data is stored locally on customer premises with optional backup in the cloud



Support and Managed Services

365mesh's Managed Services provides 24x7x365days NOC (network operations and monitoring centre) in Australia Sydney and Melbourne.



ISO270001 Certified

365mesh secure and leverage best practices in market for cybersecurity and resilience.

Contact us

Visit our Website: www.365mesh.com

Email us: sales@365mesh.com

Follow us on social media



@365mesh

outcomex

POWERING 365mesh greenmesh broadsecure



POWERED BY

365mesh