



**minedeck**

# **Environment, Workplace safety & PPE**

POWERED BY  
**365mesh**

**Smart monitoring, detection, and alerts with  
AI/ML capabilities**

*All in one IoT Solution*

[www.365mesh.com](http://www.365mesh.com)

# IoT Platform for mining and earth moving

Minedeck is an end-to-end IoT management solution designed for mining, earth moving and other heavy machinery industries with large infrastructure and construction projects.

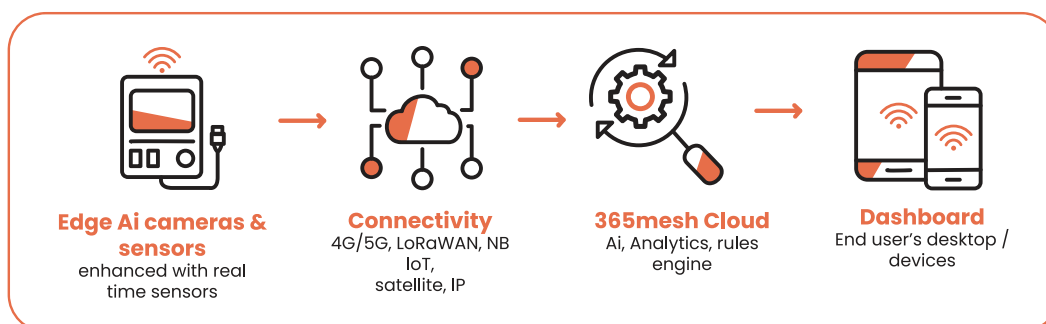
Minedeck utilises advanced Ai and machine learning technologies, as well as purpose-built sensors to aid companies in monitoring their worksite environment by providing continuous real time monitoring with early detection and warnings of potentially hazardous conditions. Minedeck's monitoring will also allow for the automation of tedious tasks to attain workplace efficiencies, whilst maintaining high levels of safety and insights for workers on site.

Minedeck also aids companies to reduce worksite accidents and fatalities by providing early detection and warnings of potential high-risk accidents before they occur, and by monitoring and implementing the correct use of protective equipment to help companies comply with industry health and safety standards.

Our organisation has over a decade of experience in networking technologies and security, which form an integral part of the underlying architecture required for IoT networks. Our extensive network engineering capabilities give us a unique ability to understand and deploy every component of an IoT network.

Our solution has been developed in Australia and New Zealand, with manufacturing facilities in New Zealand and our team of engineers providing installation and support services nationally.

## IoT Solutions Secure end-to-end IoT Solutions with advanced artificial intelligence capabilities



### Anywhere, Anytime Connectivity

- › Ethernet › LoRa
- › Wifi › Satellite

### Managed Services Provider operating

**24x7x365 days**

NOC (Network Operations Centre)  
in Sydney and Melbourne.

### 100% coverage

of earth's land  
and water surface  
areas

# Use Cases

## Environment Monitoring

Monitor and record various environmental readings on site such as noise, vibration, temperature, air quality and gas.

## PPE monitoring and detection

monitors and implements the correct use of protective equipment to help companies comply with industry health and safety standards.

## Energy Consumption

Monitors and provides a report consolidating the worksites' overall electricity and water consumption on per day, week, month, and year.

## Solar solutions monitoring

Monitor solar energy and other renewable energy sources used to generate electricity, run air conditioning and lighting, and charge battery banks.

## Weather monitoring

Monitor the site's temperature, humidity, wind, rainfall, and water flow pressure. Use data to make educated decision around boring and mining the field.



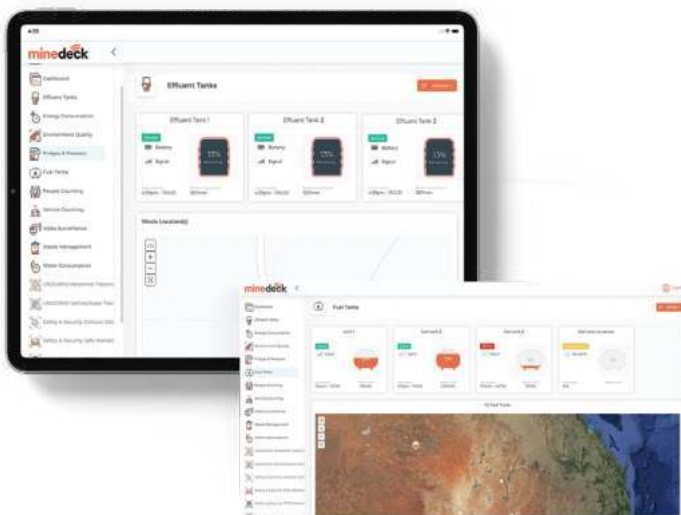
## Fuel tank monitoring

Monitor fuel tank levels in real time and receive alerts when tank levels reach a certain threshold.

Monitor Oil with inflow sensors to measure - dielectric, resistivity density, viscosity, temperature (to determine issues such as water ingress, cooling leaks, etc)

## Effluent Tanks

Effluent tanks solutions provides real-time monitoring of portable and drop toilets so that maintenance teams can optimise their cleaning schedules.



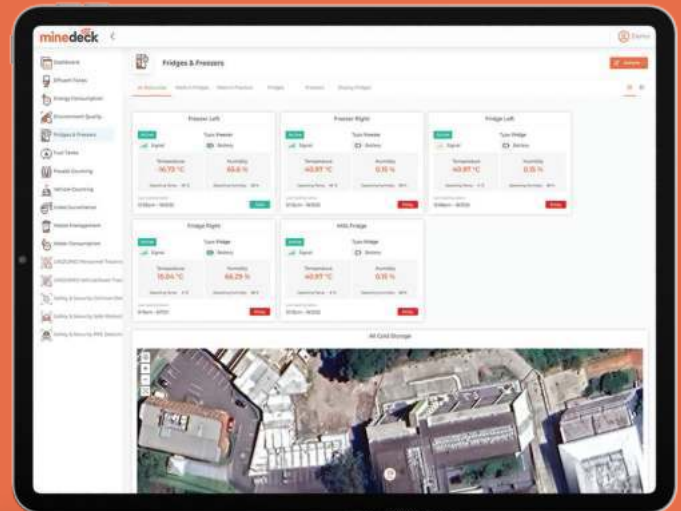


## Waste management

Monitors and differentiates the type and quantity of waste generated on site, proportions of waste, recycling vs landfill waste, and sources of waste

## Fridge & freezer temperature monitoring

Monitor the temperature of mining chillers and compressed air dryers to avoid any equipment from overheating



## People counting

(above and underground)

Count and keep track of workers entering underground and on site to ensure each personnel is always accounted for.

## Vehicle counting

(above and underground)

Count and keep track of vehicles, machinery and assets entering underground and above ground.

## Smart Video surveillance

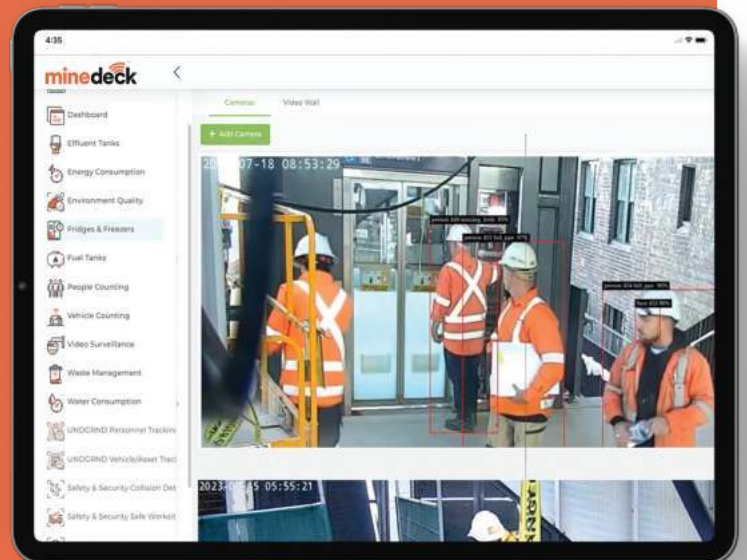
accurately monitor and detect for property intrusion, theft and provides real time location information.

## Theft detection with real time notifications

Monitor people and vehicles who enter and leave worksite, with real time notifications being directly sent to security personnel on duty via their phones or devices.

## Secure Access Control

only give access to specific areas on site to certain people at certain times.



## Workplace Project Timelapse

(With onsite cameras and via satellite imagery)

Periodic satellite imagery of projects will allow companies to create a historical progression timeline of the mining

## Digital twin

Virtually gain visibility of the mining site (above and underground) and collect data with environment simulations

# Environment Monitoring

Minedeck provides the rapid deployment of mobile solutions that can perform continuous real-time monitoring of air quality including silica dust, carbon footprint, hazardous gases and various other elements including:

- › Carbon Dioxide
- › Civil CO
- › Particle Matter 1.0/2.5/10
- › Civil Gas
- › Formaldehyde
- › Ammonia
- › Oxygen
- › Ozone
- › Hydrogen Sulfide
- › Nitrogen Dioxide
- › Sulfur Dioxide
- › Chlorine Gas
- › Total Volatile Organic Compounds
- › Respirable Crystalline Silica

## Air quality monitoring and detection of hazardous air Particles

Monitor air particles such as crystalline silica dust, and automatically alerts control rooms of any abnormalities in the air.

## Hazardous chemicals detection, monitoring, and alerts

monitors and detects components such as carbon monoxide, nitrogen oxides, black carbon (above and underground) and alert control rooms of any abnormalities.

## Gas monitoring

Fixed and portable gas monitors detect the presence of toxic, asphyxiant and explosive gases such as methane, hydrogen sulfide and oxygen deficiency/enrichment.



## Vibration Monitoring and alerting

Monitors vibration performance in real time and triggers immediate alerts to prevent regulatory thresholds from being breached.

## Ventilation units monitoring and alerts

Monitors the condition of air flow through ventilation units. Alerts are sent to authorised personnel when units are faulty or inactive.

## Carbon Footprint monitoring and reporting

Monitors the air quality and greenhouse gases such as carbon dioxide, methane, ozone, and nitrous oxide. Data collected assists to make educated decisions to mitigate carbon emissions.

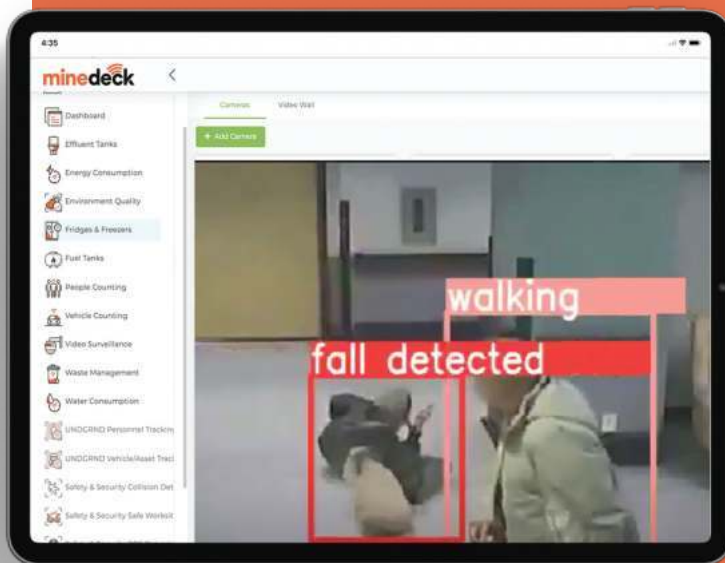
# On site operational health, safety and PPE

## Safety PPE Detection

Identifies PPE items (hard hats, mask, safety vests, safety goggles etc) and monitors whether workers are properly wearing it while on site.

## RFID Tags

Utilise RFID tags which can track and identify workers who do or do not comply with PPE standards.



## Person down detection

Detects when a person has fallen/tripped and triggers instant alerts.

## Reports on trips and fall detection

keeps a count record of areas with repeated trips and fall incidents and identifies hazardous areas.

## Personnel and vehicle site access & tracking and monitoring

Utilise tags and facial recognition to implement site safety monitoring and track assets in real time.

## Create virtual boundaries/GEO fencing

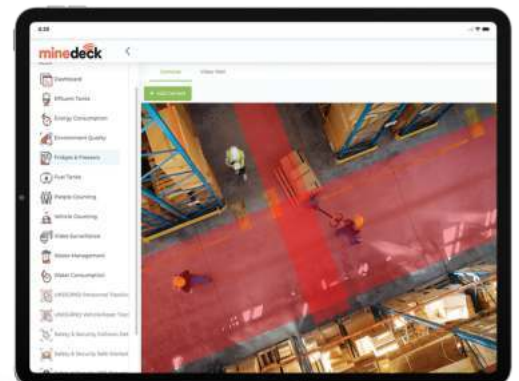
create a virtual exclusion zone and receive real time alerts when an unauthorised worker enters the exclusion zone, Integrates with excavators and machinery, and stops machinery if the virtual boundary is crossed.

## Detect potential workplace incidents

Determine safe distances between workers and machinery with exclusion zones.

## Pedestrian vehicle/machinery accident detection

Detects when a moving person and vehicle are in a potential path of collision and advises of safer walking path practices.





## Monitors high noise level environments

Monitors noise levels from activities such as boring, drilling, digging and loud machinery vehicles and vibration performance in real time.

## Object identification and differentiation

AI capabilities to accurately identify and differentiate between people demographics, vehicle types, machinery assets, and provide real time location information.

## Rapid deployment of mobile solutions

Minedeck monitoring and detection solutions can be deployed anywhere with mobile trailers with cameras and sensors that can be mounted onto telescopic poles, vehicles and onsite

# Your security is our priority.

**Data collected from the sensors is owned by the customer and data is stored locally on customer premises with optional backup in the cloud.**

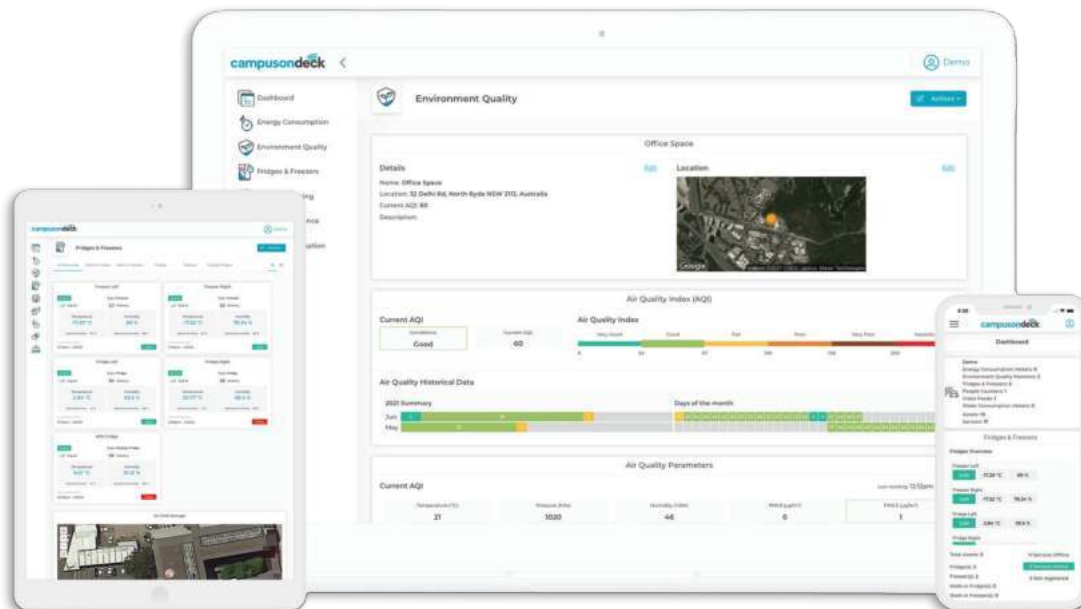
## Locally manufactured in Australia for fast shipping and local support

- > Rapid prototyping
- > Injection moulding
- > Assembly and shipping
- > Electronics PCB
- > Hardware testing
- > Manufactured by experienced engineers





# Get real-time visibility of your environment and facilities with 365mesh IoT portal.



## WE ARE FOUND GLOBALLY



## Contact us

Visit our Website: [www.365mesh.com](http://www.365mesh.com)

Email us: [sales@365mesh.com](mailto:sales@365mesh.com)

Follow us on social media



**outcomex**

POWERING 365mesh greenmesh broadsecure