



# campusondeck

POWERED BY  
**365mesh**

**Air Quality, Health, Safety & Security**  
All in one IoT Solution

# Campusondeck IoT Platform for Education Providers

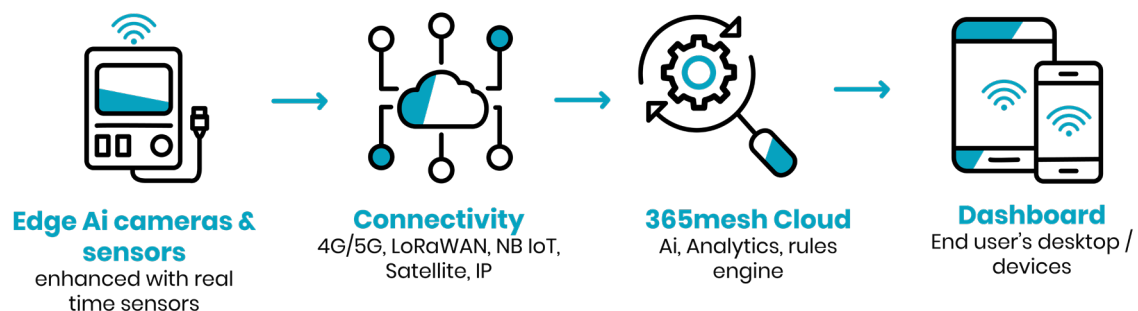
Campusondeck is an end to end IoT management solution designed for educational providers such as schools, universities, development centres and training facilities.

Campusondeck utilises advanced Ai and machine learning, as well as purpose built sensors to aid education institutes to increase the security and safety of those in their building, monitor and gain insights on how their facility spaces are being used, as well as tracking the facilities's utility consumption.

Our organisation has over a decade of experience in networking technologies and security, which form an integral part of the underlying architecture required for IoT networks. Our extensive network engineering capabilities give us a unique ability to understand and deploy every component of an IoT network.

Our solution has been developed in Australia and New Zealand, with manufacturing facilities in New Zealand and our team of engineers providing installation and support services nationally.

## Secure end to end IoT Solution with advanced Artificial Intelligence capabilities



### Anywhere, Anytime Connectivity

- › Ethernet
- › Wifi
- › LoRa
- › Satellite

### Managed Services Provider operating

**24x7x365 days**

NOC (Network Operations Centre)  
in Sydney and Melbourne.

## Use Cases



### Site Safety/Staff Security

Monitor the campus and ensure the safety of students/staff on premises



### Smart Video Surveillance

improve the safety of the campus and learn where there are potential risks



### Secure Access Control

only give access to specific areas on campus to certain people at certain times



### Detect water leaks and manage water

monitor the campus water sources (taps, sprinklers, fountains) and detects leaks



### Desk/Room Occupancy

gain visibility, count and monitor how many people are using the space during certain times



### Desk/Room Booking

allow students and staff to book spaces and gain visibility on what spaces are being used



### Smart Lighting

enables sensed lights in classrooms and facilities to light up when people are sensed



### Waste Management

detects litter levels of bins and sends alerts when bins are at a certain level or full



### Crowd Monitoring

Real time and historic heatmaps of where people congregate and pedestrian flow



### People Counting

counts and keeps track of people entering and exiting rooms and spaces at certain times



### Sense audible indicators

detect alarming audio such as glass breaking, gun shots, screaming, etc and send alerts



### Person down & accident alert

monitors gyms and courts and receive alerts when accidents occur



### Identify persons of interest

on the premises who may be intruding



**Track People, Vehicles,**  
track assets and location advice (vehicle inventory and maintenance)



### Traffic Monitoring

gain traffic insights on drop off & Pick up areas, buses stops and entries/exits



### Parking Management

Gain visibility on occupancy rates and how parking spaces are being used on campus



### Telemetry integration

with school owned vehicles  
(Driver behaviour & vehicle maintenance)



### Automation & Remote Control

automate tedious tasks and remotely control campus gates, doors etc



### Digital Twin

virtually gain visibility of the campus and collect data with environment simulations



### Fridge Temperature Monitoring

monitor fridges and freezers in canteens and hospitality facilities to ensure food products are stored properly

## Use Cases



**Vape & Smoke Detection**  
identifies gas signatures  
in smoke substances  
such as vape, THC smoke  
and tobacco



**Environmental  
Monitoring**  
temperature, noise  
levels, air quality and light  
brightness



**Detail view of Energy  
Consumption**  
collect itemised reading  
from each circuit and  
appliance



**Way Finder**  
navigate around campus  
with ease.  
Find classrooms and  
facility rooms faster

**Monitor air quality in real-time to detect hazardous gases and an array of other elements, such as:**



Carbon Dioxide



Civil CO



Particle Matter  
1.0/2.5/10



Civil Gas



Formaldehyde



Ammonia



Oxygen



Ozone



Hydrogen Sulfide



Nitrogen Dioxide



Sulfur Dioxide



Chlorine Gas



Total Volatile  
Organic Compounds



Respirable  
Crystalline Silica

**Detect > Analyse > Act & Automate**



æther

**Senses and detects:**

- > Air quality and atmospheric contaminants
- > Room presence/occupancy
- > Audible indicators of aggression, distress, damage
- > Theft detection – breaking glass
- > Ambient temperature, humidity, pressure
- > People Counting

All while remaining secure against physical and digital exploits

**Sense air quality and atmospheric contaminants**

Identify gas signatures for

- > Vaping
- > THC smoking
- > Tobacco smoke
- > Methane
- > Other fumes



Identify and measure harmful airborne particles and gases (i.e.CO2, VOC, Silica dust)

**Detect danger before its too late.****Sense room presence and occupancy**

AI/ML motion, sound and light detection capabilities to detect people and occupied spaces.

**Sense audible indicators of aggression, distress, damage**

Uses AI/ML noise detection technology to detect and differentiate alarming audio such as glass windows breaking, gun shots, screaming, etc and sends alerts to all required personnel to act promptly.

**Sense and report ambient temperature, humidity, pressure**

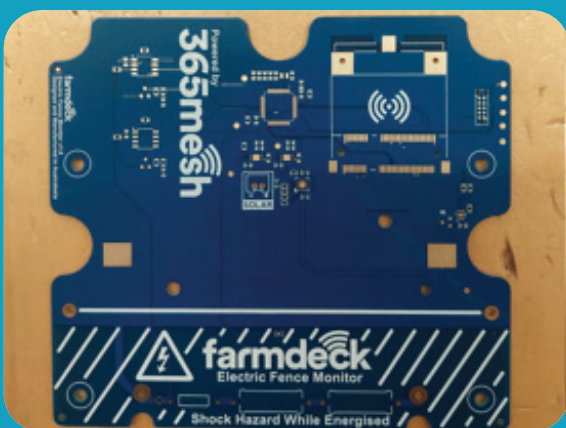
Measures and monitors the spaces temperature, relative humidity, VOC, NOx, PM1, 2.5, 4, 10, and alerts personnel when readings exceed a certain range. Device is actively ventilated with a built in fan.

# Your security is our priority.

Cloud based solution where the data collected from the sensors is owned by the customer and can be stored on the customer's data farm with optional back-up in the cloud.

## Locally manufactured in Australia for fast shipping and local support

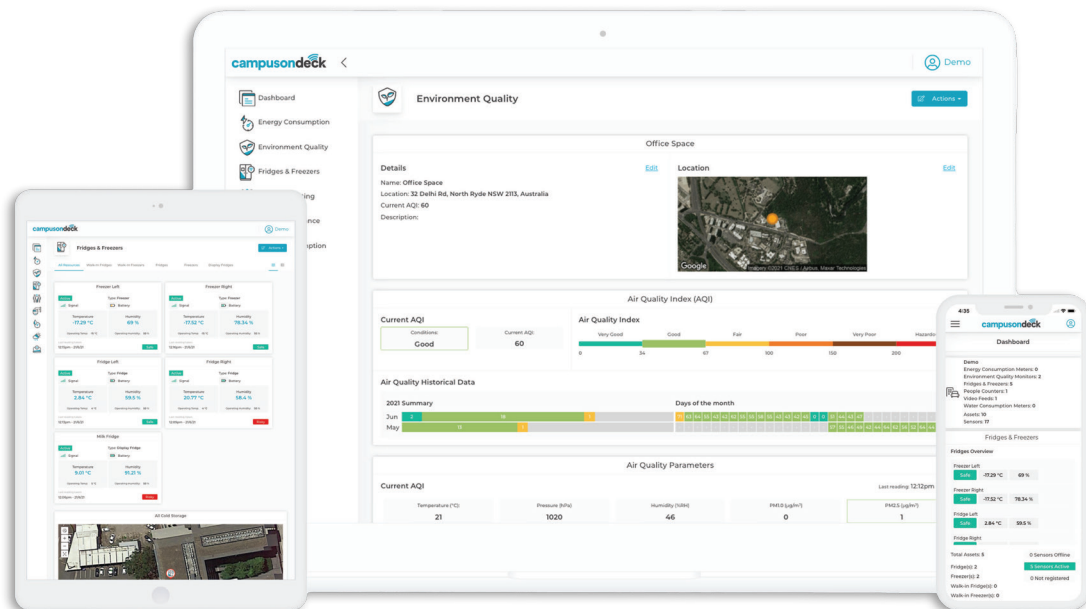
- › Rapid prototyping
- › Injection moulding
- › Assembly and shipping
- › Electronics PCB
- › Hardware testing
- › Manufactured by experienced engineers



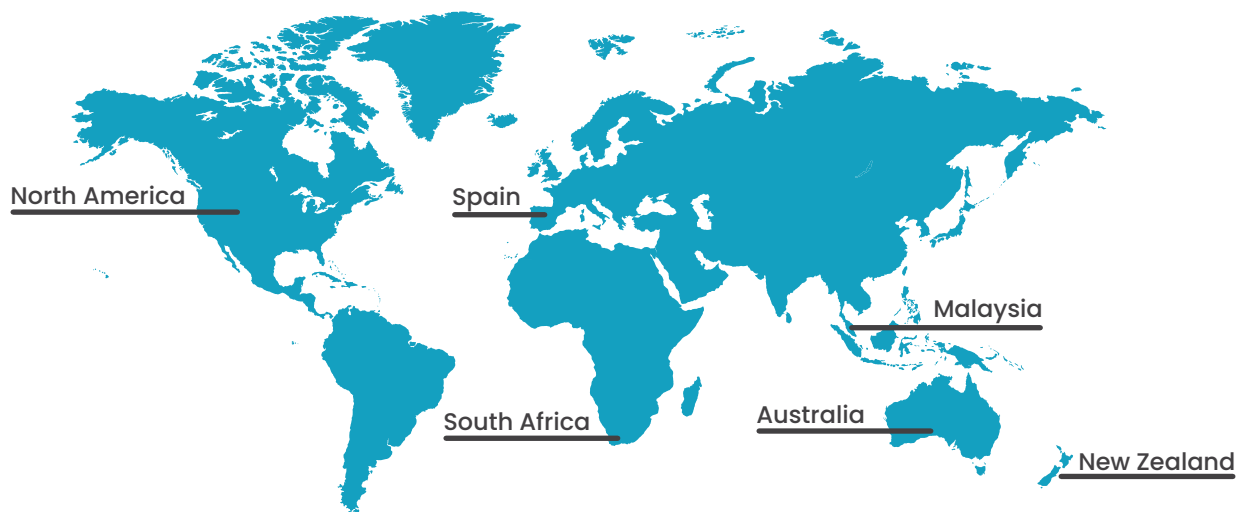
## Remain secure against physical and digital exploits and defeats

Anti tamper and defeat integrity against dismounting, disassembling, relocation, obstruction of intel ports. Back up battery to protect against any disruption of power supply. Software measure to protect against unauthorised reset or provisioning, signal blocking and destruction of device.

# Get real-time visibility of your environment and facilities with 365mesh IoT portal.



## WE ARE FOUND GLOBALLY



## Contact us

Visit our Website: [www.365mesh.com](http://www.365mesh.com)

Email us: [sales@365mesh.com](mailto:sales@365mesh.com)

Follow us on social media



**outcomex**

POWERING 365mesh greenmesh broadsecure





# campusondeck

POWERED BY  
365mesh