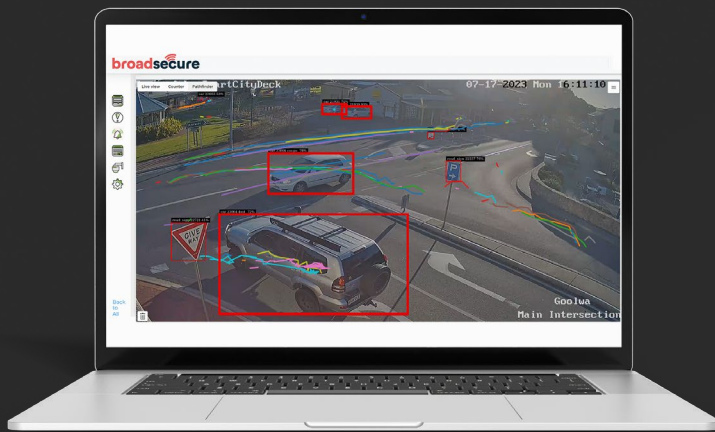


broadsecure

POWERED BY
365mesh

INTELLIGENT, CLOUD BASED VIDEO SURVEILLANCE SOLUTION WITH ADVANCED AI/ML CAPABILITIES



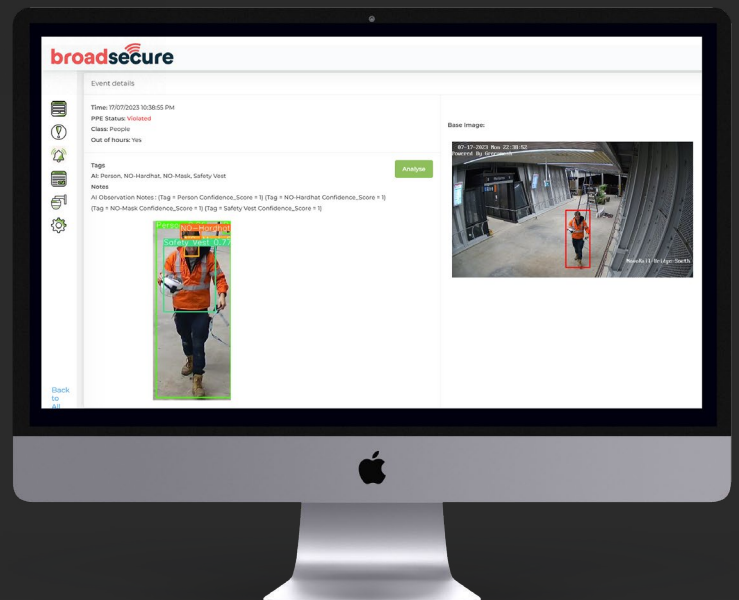
Broadsecure is an intelligent end-to-end cloud based video surveillance solution that utilises advanced AI/ML technology to detect and identify a wealth of objects and movements through processing live video footage imagery and data collection features for analysis.

Broadsecure provides users with comprehensive surveillance over their environment and has the ability to detect and track people and objects accurately. Broadsecure can also differentiate between individuals and objects, recognise faces, identify suspicious behaviour, analyse patterns around people flow and movements, detect abnormal activities and raise alerts to security personnel. Our solution's capabilities can also improve and bolster the user's workplace safety, access control, visitor management, employee attendance, and contractor compliance.

WHAT MAKES US DIFFERENT

- Our solution can be integrated with the user's existing IP cameras already on site, meaning existing cameras do not need to be replaced to use Broadsecure
- Our AI/ML capabilities can detect and identify objects and movements with extremely high levels of accuracy.
- ISO27001 certified: We keep your environment safe, as well as your data.

Our organisation has over two decades of experience in networking technologies and cyber security, which form an integral part of the underlying architecture required for IoT and other networks. Our extensive network and software engineering capabilities give us a unique ability to understand and deploy every component of a video surveillance or IoT network.



SMART SECURITY. WHERE EVER YOU NEED IT.

Broadsecure can be utilised across a range of industries

- Agriculture and Farming
- Smart Cities
- Corporate workplaces
- Transport and Logistics
- Education
- Health care and Aged care
- Industrial and Manufacturing
- Oil, Mining and Gas
- Ocean and Marine
- Parks and Wildlife
- Retail and Food
- Defence

USE CASES



Intelligent, cloud based video surveillance solution
With advanced AI/ML capabilities



Compatible with users' existing cameras
No need to replace cameras



Single dashboard with floor MAP
Shows all camera locations with one-click access to live video feeds



Streaming backup to cloud
Multiple storage durations for footage: 30, 60, 90, 120, 180 Days (custom)



Image Detection and Identification
Advanced AI/ML capabilities to accurately process and detect items off footage



Object Identification
AI capabilities to accurately identify objects



Animal Identification
AI capabilities to accurately identify species of animals



Identify and classify by people demographics
AI capabilities to identify age, gender, colour and type of clothing



Identify only people of interest
Protect the privacy of people outside the watch list with a no biometric data saving enabling option



Behavioural analysis capabilities
Manage and analyse people's behaviours to optimise standard operating procedures



Allow Motion Search
Search and filter through a library of motions within specific area of interest in the video stream. Set an alert for any activity within a particular area of interests.



Face Search with integration into AD
Pull up a library of faces detected and select one to see all the times and dates of when they were identified in footage



Motion heat maps
View the way people or objects move around areas, including Push events/triggers



Person tracking based on facial or electronic tag
Utilise tags and facial recognition to implement site safety monitoring and automate time attendance



Create custom zones
Narrow down areas of interest on a field of view. Collect data and set up alerts that occur only within this zone



Create virtual fences and boundaries
Create landscape boundaries on a digital map and contain people/animals using tags



History View
View the history of data collected which updates every hour, up to 120 days



ONVIF compliant
Remotely control the cameras' zoom, focus etc



Real time camera surveillance
With intelligent detection directional pan, tilt and zoom capabilities



Share access
Send incident alerts to anyone via sms and email

WORKPLACE SAFETY



Detect workplace incidents and alert before they happen
Identify potential problems quickly and isolate recurring problems



Man down detection and alerting
Instantly trigger alerts so immediate action can be taken



Workplace machinery exclusion zone monitoring and detection
Keep unauthorised personnel safe and distant from caution zones



Pedestrian vehicle/machinery accident detection
Reduce the risk of vehicle-pedestrian collisions in busy workspaces



Machinery safe distance monitoring and alerting
Produce an alert triggering detection zone around machines and restricted areas



Collision detection and avoidance
Install blind spot detection cameras, giving drivers real-time warnings of collision risks



PPE monitoring, detection and identification
Identify PPE and deny workers from entering job sites if all the safety wear required is not detected



Realtime electronic tags for unique identification
Utilise tags to implement site safety monitoring around exclusion zones

CONTACT US