

Feature Description

Working with the Farmdeck app, the weather station allows to measure and monitor weather parameters such as air temperature, wind, air pressure, humidity, rainfall and wind direction.



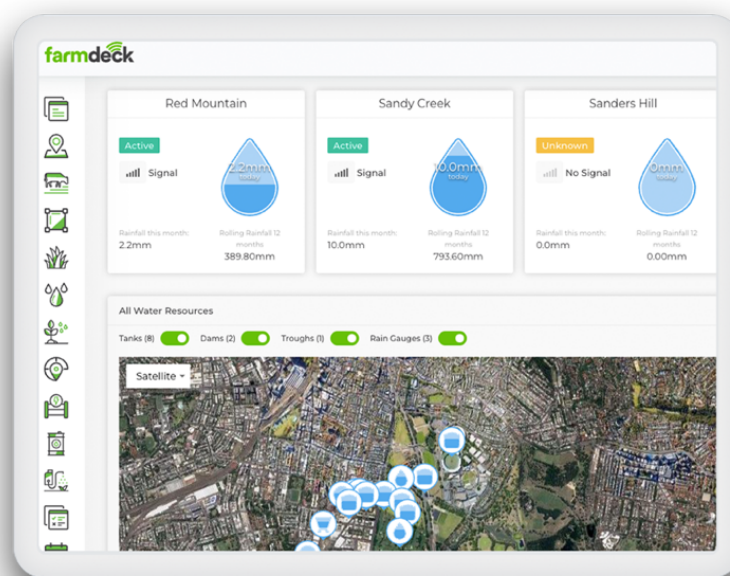
Features

Accurately measures and monitors

- Temperature
- Wind speed
- Air pressure
- Rainfall
- Integrated with the Farmdeck Spray Condition report
- Provide alerts based on weather conditions.

Applications

- Farm specific weather condition monitor
- Spray Condition Report
- Use to forecast season weather conditions



Rainfall monitoring

Housing	Tipping spoon, 0.01" per tip for US versions, 0.2 mm for metric versions, 33.2 in2 (214 cm2) collection area:
Dimensions (mm)	220 x 220 x 320mm
Weight	0.997kg
Case Material	UV-stabilized ABS plastic
Battery	Solar panel with 18600 mAH rechargeable battery
Expected battery life	Up to 5 years
Data Type	Wind speed (m/sec), Wind Direction (360 degrees), Temperature (°C), Relative Humidity (%), Barometric Pressure (Pa)
Collection area	200cm2

Radio/Wireless Connection

Wireless technology	LoRaWAN 1.0.3/1.1
Supported LoRaWAN device type	Class A End-device
Supported LoRaWAN Regions	US902 - 928,AS923, AU915 - 928, KR920-923
Configuration	OTAA, ABP, ADR

Optional Cellular Connection

Wireless Technology	LTE-M/NB/IoT
Supported LTE Bands	LTE-M (Cat-M1): B1, B2, B3, B4, B5, B8, B12, B13, B14, B17, B18, B19, B20, B25, B26, B28, B66 NB-IoT (Cat-NB1/NB2): B1, B2, B3, B4, B5, B8, B12, B13
SIM card and format	Internal Nano 4FF SIM