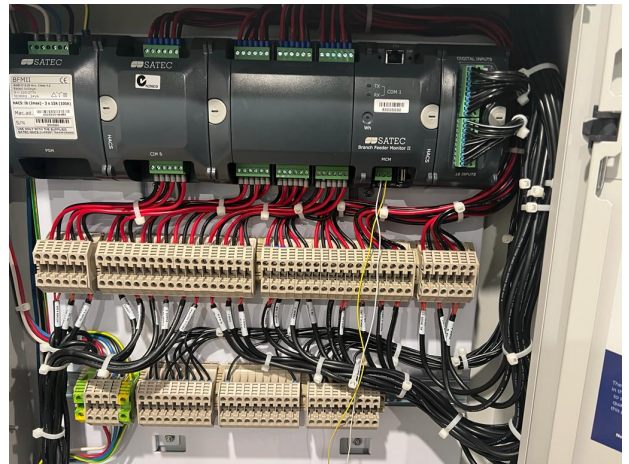


## Sensor Description

Farmdeck's single node energy management sensor is a comprehensive multi-functional energy metre, which provides a complete range of energy measurement and management. It measures the electrical energy and connects via digital inputs to water, gas or air condition meters.



## Features

- Single phase and 3-phase power metering
- Billing TOU energy metre
- Harmonic analyser
- Real-time waveform capture
- Programmable logical controller
- Event and data recording
- Communication protocols
- Meter security
- Upgradable firmware
- suitable for sub-metering for the Australian Market.

## Applications

- residential energy metering
- industrial energy
- harmonic analysis
- utility comprehensive substation automation.



# Energy Management Sensor (single node)



powered by Outcomex

Datasheet | Published 20.06.2022

## Mechanical Features

Housing	Enclosed
Dimensions (mm)	360 x 280 x 210 mm
Weight	-
Case Material	ABS, polycarbonate and polyester

## Device Power Supply

Battery	Solar panel with 1000 mAh battery
Expected battery life	Up to 10 years

## Operating Conditions

Temperature	-40°C to +125 °C
-------------	------------------

## Radio/Wireless Connection

Wireless technology	LoRaWAN 1.0.3/1.1
Supported LoRaWAN device type	Class A End-device
Supported LoRaWAN Regions	US902 - 928, AS923, AU915 - 928, KR920-923
Configuration	OTAA, ABP, ADR

## Optional Cellular Connection

Wireless Technology	LTE-M/NB/IoT
Supported LTE Bands	LTE-M (Cat-M1): B1, B2, B3, B4, B5, B8, B12, B13, B14, B17, B18, B19, B20, B25, B26, B28, B66 NB-IoT (Cat-NB1/NB2): B1, B2, B3, B4, B5, B8, B12, B13
SIM card and format	Internal Nano 4FF SIM