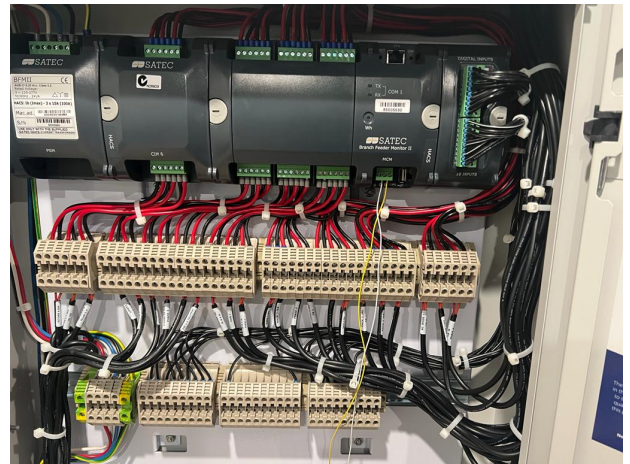


Sensor Description

Farmdeck's Multi circuit energy monitor or multi channel energy meter is a comprehensive multi-functional energy metre, which provides a complete range of energy measurement and management. It measures the electrical energy and connects via digital inputs to water, gas or air condition meters. It is suitable for billing/trade in the Australian market.

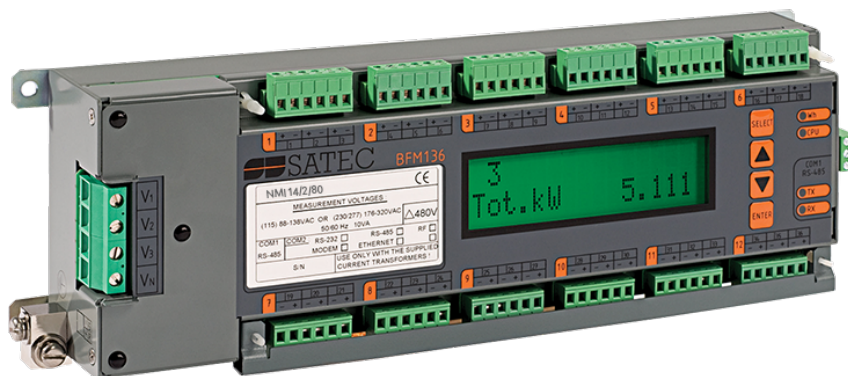


Features

- 12 three phase circuits or 36 single phase circuits
- Designed to easily fit into existing panel boards or be flush mounted nearby, thus eliminating the need for expensive retrofit
- Provides a complete set of energy and demand data on multi-tariff basis for billing purposes.
- Meter sealing option for voltage and current inputs
- Compliant with ANSI and IEC specifications
- Compact design for easy installation within existing or new electric panel boards
- Real Time Clock

Applications

- Residential energy metering
- Industrial energy
- Harmonic analysis
- Utility comprehensive substation automation.



Energy Management Sensor (multi node)



powered by Outcomex

Datasheet | Published 20.06.2022

Mechanical Features

Housing	enclosed
Dimensions (mm)	380x 220 x 140mm
Weight	-
Case Material	ABS, polycarbonate and polyester

Device Power Supply

Battery	Solar panel with 1000 mAh battery
Expected battery life	Up to 5 years

Operating Conditions

Temperature	-40°C to +125 °C
-------------	------------------

Radio/Wireless Connection

Wireless technology	LoRaWAN 1.0.3/1.1
Supported LoRaWAN device type	Class A End-device
Supported LoRaWAN Regions	US902 - 928, AS923, AU915 - 928, KR920-923
Configuration	OTAA, ABP, ADR

Optional Cellular Connection

Wireless Technology	LTE-M/NB/IoT
Supported LTE Bands	LTE-M (Cat-M1): B1, B2, B3, B4, B5, B8, B12, B13, B14, B17, B18, B19, B20, B25, B26, B28, B66 NB-IoT (Cat-NB1/NB2): B1, B2, B3, B4, B5, B8, B12, B13
SIM card and format	Internal Nano 4FF SIM